



Marine Life Protection Act Initiative



Progress in MLPA Planning & Implementation

Presentation to the
Gulf of the Farallones National Marine Sanctuary &
Monterey Bay National Marine Sanctuary Advisory Councils
February 18, 2010 • Half Moon Bay

Paul Reilly, California Department of Fish and Game



MLPA Regional Program Phases

- Central Coast (CC): Monitoring
- North Central Coast (NCC):
Implementation and Monitoring
- South Coast (SC): Adoption
- North Coast (NC): Planning
- San Francisco Bay: Future



Central Coast Monitoring

- First year of CC baseline data collection summarized in Sea Grant report:
 1. Kelp Forest Ecosystems
 2. Rocky Intertidal
 3. Deep Demersal
 4. Collaborative Fishing Surveys
 5. Socioeconomic Surveys



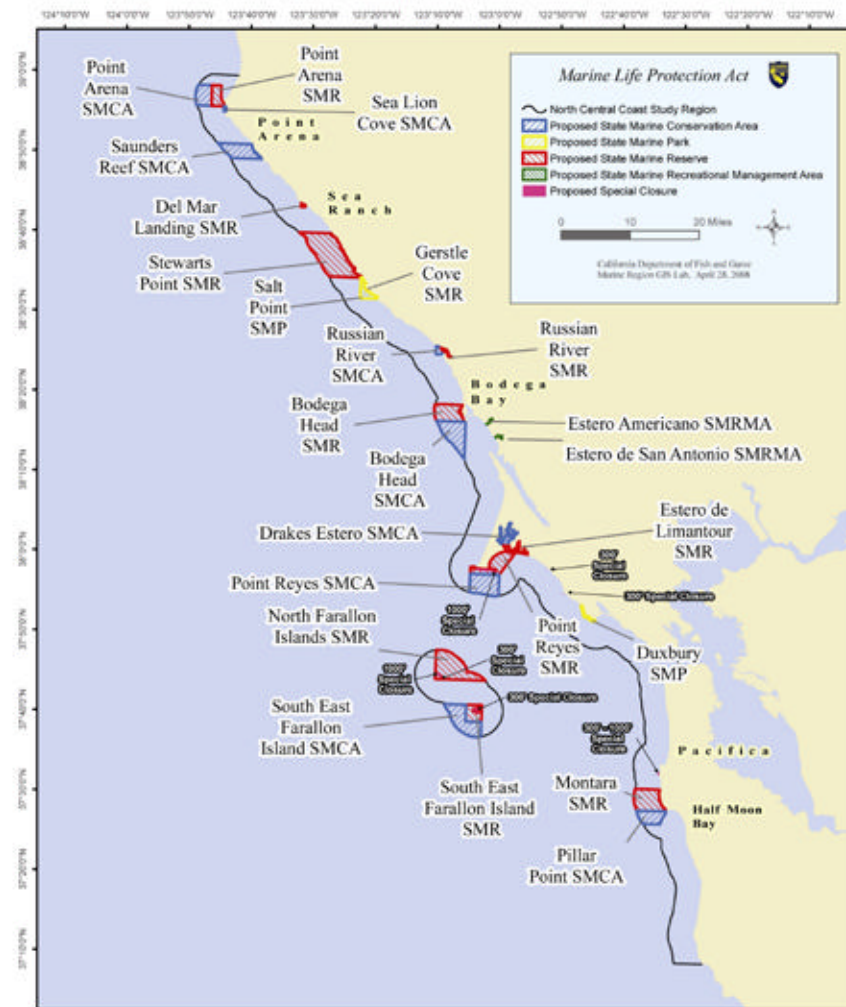
Central Coast Monitoring

- Additional CC baseline conducted by DFG including:
 1. ROV Surveys
 3. Nearshore Fish Trapping
 5. Spot Prawn Surveys
(Portuguese Ledge & Soquel Canyon SMCAs)
 7. Population & movement surveys
(Carmel Pinnacles SMR)



North Central Coast Implementation

- NCC MPAs adopted by the Commission in August 2009
 - 24 MPAs
 - 8 Special Closures
 1. (5 mainland;
 2. 3 at Farallon Islands)
- Regulations expected to become effective April 1, 2010



**North Central Coast Study Region
Integrated Preferred Alternative**

This marine protected area (MPA) proposal was unanimously selected on April 23, 2008 by the MLPA Blue Ribbon Task Force (BRTF) as its preferred alternative and is being submitted to the California Fish and Game Commission (CFG) for consideration. This proposal integrates elements from three proposals developed by the North Central Coast Regional Stakeholder Group (NCCSRG) (proposals 1-3, 2-XA, and 4). These NCCSRG proposals will also be forwarded in their entirety to the CFG for consideration. Further information on each MPA proposal can be found in the associated text document with the same MPA proposal name.





North Central Coast Outreach Plans

1. Regional MPA regulations booklet
2. Fold-out maps
3. Temporary signage
4. Flyers (for harbors, processors, launch ramps)
5. Online clickable map
6. Statewide MPAs Regulations Digest (in progress)
7. Long term statewide signage plan (under development)



North Central Coast Monitoring Plan

- A peer reviewed Draft NCC Monitoring Plan was released for public comment on November 10, 2009
- A revised NCC Monitoring Plan was submitted to the Fish & Game Commission on February 3, 2010
- A copy of the draft plan is available at:
http://www.calost.org/monitoring_ent.html#Draft



North Central Coast Monitoring

- \$3.7 million through OPC for baseline monitoring in NCC
- Proposals already submitted -
Announcement of projects awarded expected before MPAs go into effect (by April 1, 2010)
- Awarded projects will be posted on the Sea Grant website: www.csgc.ucsd.edu



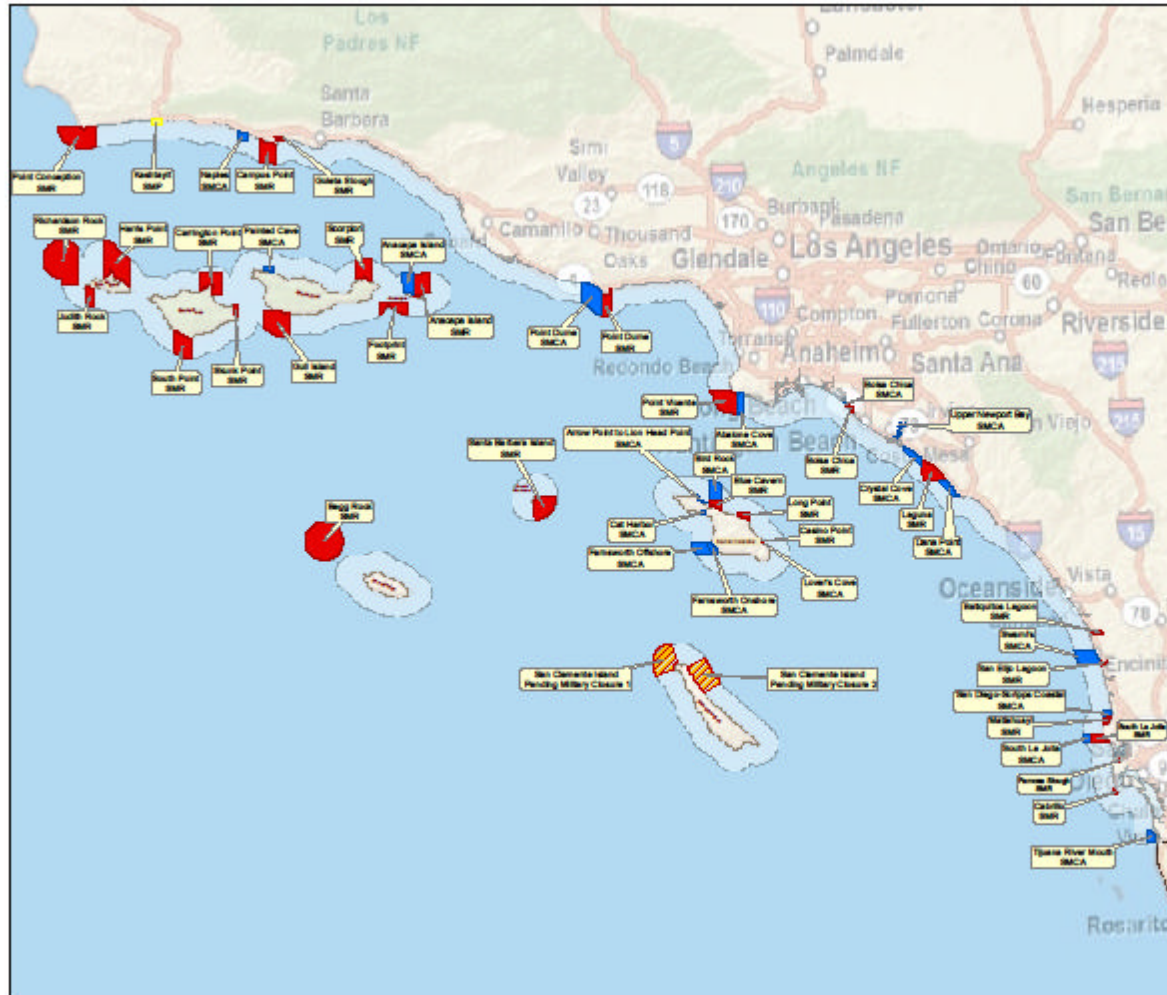
South Coast Planning: Complete

- Sep 2009: Regional Stakeholder Group (RSG) finalized three proposals
- Oct - Nov 2009: BRTF created an Integrated Preferred Alternative (IPA)
 - Includes elements of all 3 RSG proposals
 - All proposals forwarded to Commission
- December 2009: Commission chose the IPA to initiate south coast CEQA and regulatory process (now underway)

S. Coast IPA for Commission Process



MLPA South Coast Study Region:



California Marine Life Protection Act (MLPA) Initiative

MLPA South Coast Integrated Preferred Alternative (IPA) MPA Proposal

- Legend**
- Pending Military Closure
 - Proposed State Marine Conservation Area (SMCA)
 - Proposed State Marine Park (SMP)
 - Proposed State Marine Reserve (SMR)
 - South Coast Study Region Boundary

This marine protected area (MPA) proposal was unanimously adopted on November 10, 2009 by the MLPA Blue Ribbon Task Force (BRTF) as the MLPA South Coast Integrated Preferred Alternative (IPA) MPA Proposal to be recommended to the California Fish and Game Commission (CFGC).

The IPA integrates elements from three MPA proposals developed by the MLPA South Coast Regional Stakeholder Group (SCSRG). SCSRG MPA proposals 1, 2 and 3 will also be forwarded to the CFGC for consideration. Further information about each MPA proposal is available on the MLPA website and in MarineMap.



For more detailed maps please visit: www.marinemap.org/marinemap

Projection Information:
 Name: NAD 1983 California Teale Albers
 Projection: Albers
 Datum: North American 1983

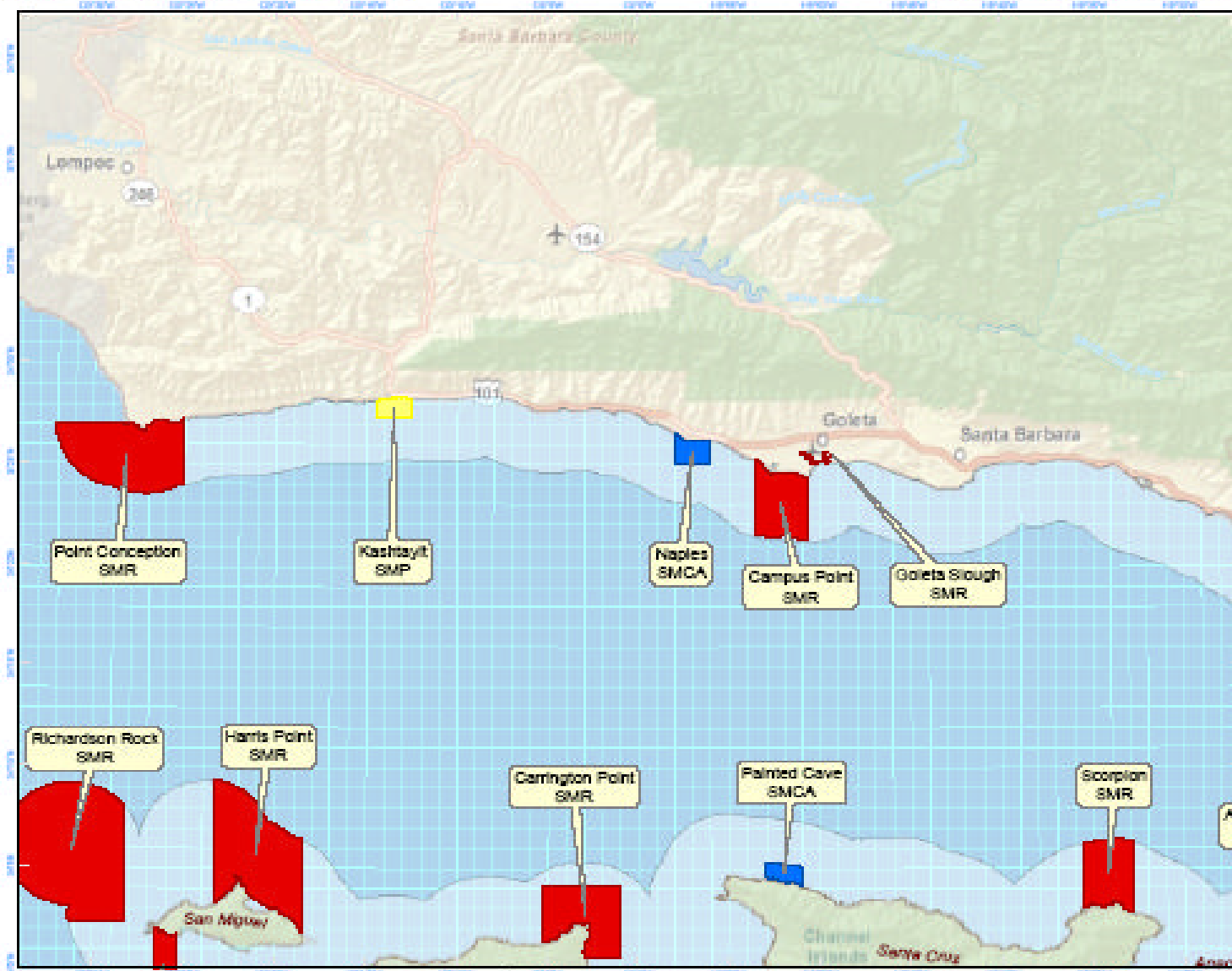


0 10 20 Miles
 1:1,650,000

Compiled on: 11/17/2009
 Created By:
 Marine Map, Cartographic Division UCSB

MLPA South Coast Study Region:

Subregion 1 - Government Point to Rincon Point



California Marine Life Protection Act (MLPA) Initiative

MLPA South Coast Integrated Preferred Alternative (IPA) MPA Proposal

- Legend**
- Pending Military Closure
 - Proposed State Marine Conservation Area (SMCA)
 - Proposed State Marine Park (SMP)
 - Proposed State Marine Reserve (SMR)
 - South Coast Study Region Boundary

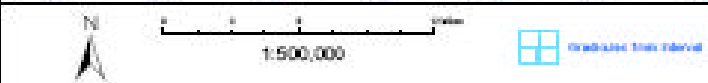
This marine protected area (MPA) proposal was unanimously adopted on November 10, 2009 by the MLPA Blue Ribbon Task Force (BRTF) as the MLPA South Coast Integrated Preferred Alternative (IPA) MPA Proposal to be recommended to the California Fish and Game Commission (CFGC).

The IPA integrates elements from three MPA proposals developed by the MLPA South Coast Regional Stakeholder Group (SCSRG): SCSRG MPA proposals 1, 2 and 3 will also be forwarded to the CFGC for consideration. Further information about each MPA proposal is available on the MLPA website and in MarineMap.

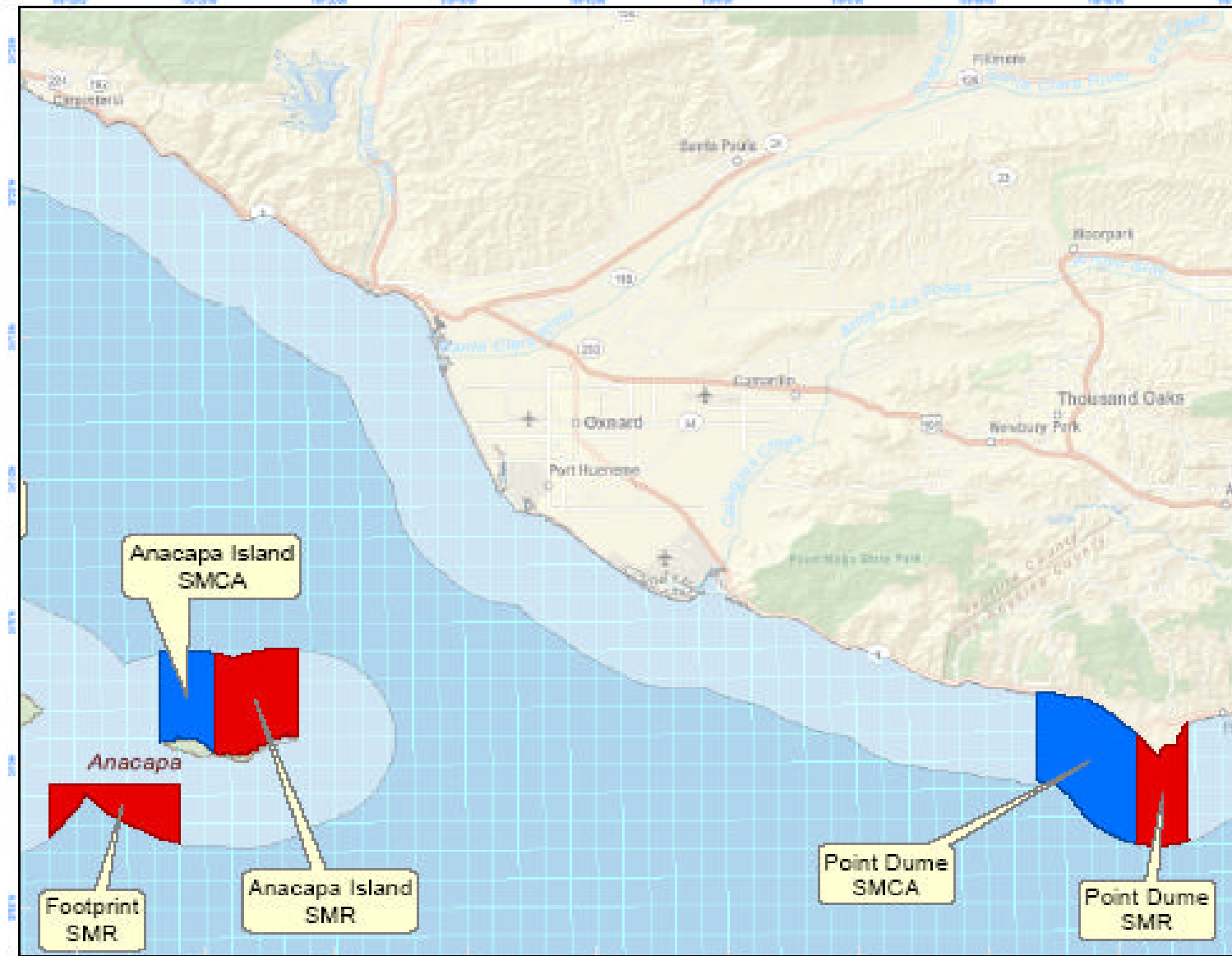


For more detailed maps please visit: www.marinemap.com/marinemap

Projection Information:
 Name: NAD 1983 California State Albers
 Projection: Albers
 Datum: North American 1983



Compiled on: 11/16/2008
 Created By: Marine Map, Cartographic Division UCSB



California Marine Life Protection Act (MLPA) Initiative

MLPA South Coast Integrated Preferred Alternative (IPA) MPA Proposal

- Legend**
- Pending Military Closure
 - Proposed State Marine Conservation Area (SMCA)
 - Proposed State Marine Park (SMP)
 - Proposed State Marine Reserve (SMR)
 - South Coast Study Region Boundary

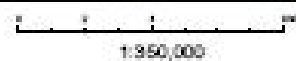
This marine protected area (MPA) proposal was unanimously adopted on November 10, 2006 by the MLPA Blue Ribbon Task Force (BRTF) as the MLPA South Coast Integrated Preferred Alternative (IPA) MPA Proposal to be recommended to the California Fish and Game Commission (CFGC).

The IPA integrates elements from three MPA proposals developed by the MLPA South Coast Regional Stakeholder Group (SCSRG); SCSRG MPA proposals 1, 2 and 3 will also be forwarded to the CFGC for consideration. Further information about each MPA proposal is available on the MLPA website and in MarineMap.



For more detailed maps please visit:
www.marinemap.org/marinemap

Projection Information:
 Name: NAD 1983 California Teale Albers
 Projection: Albers
 Datum: North American 1983



Compiled on: 11/15/2006
 Created By:
 Marine Map, Cartographic Division USCG

MLPA South Coast Study Region:

Subregion 3 - Point Dume to Newport

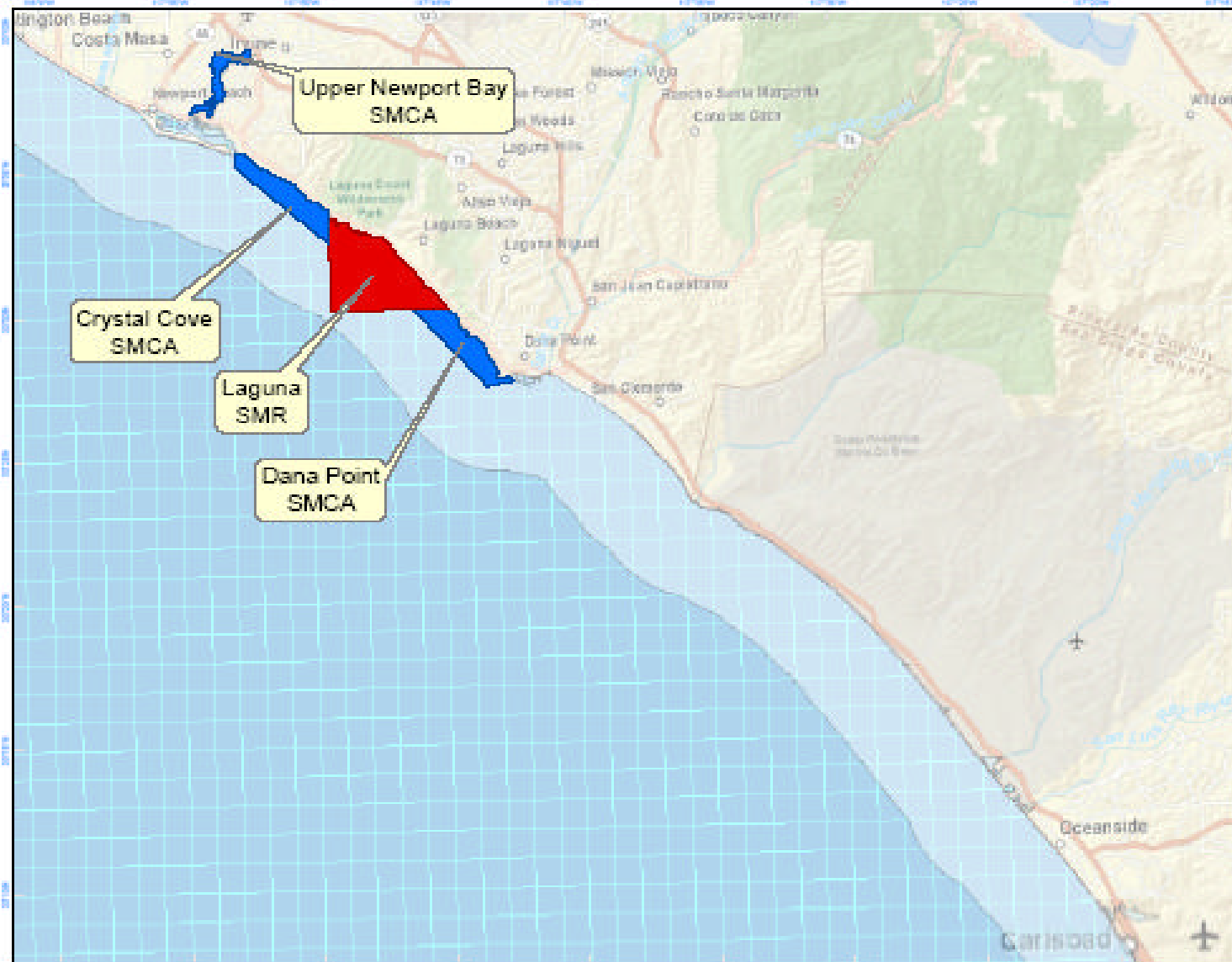


Projection Information:
 Name: NAD 1983 California State Albers
 Projection: Albers
 Datum: North American 1983



MLPA South Coast Study Region:

Subregion 4 - Newport Beach to Agua Hedionda



California Marine Life Protection Act (MLPA) Initiative

MLPA South Coast Integrated Preferred Alternative (IPA) MPA Proposal

- Legend**
- Pending Military Closure
 - Proposed State Marine Conservation Area (SMCA)
 - Proposed State Marine Park (SMP)
 - Proposed State Marine Reserve (SMR)
 - South Coast Study Region Boundary

This marine protected area (MPA) proposal was unanimously adopted on November 10, 2009 by the MLPA Blue Ribbon Task Force (BRTF) as the MLPA South Coast Integrated Preferred Alternative (IPA) MPA Proposal to be recommended to the California Fish and Game Commission (CFGC).

The IPA integrates elements from three MPA proposals developed by the MLPA South Coast Regional Stakeholder Group (SCSRG); SCSRG MPA proposals 1, 2 and 3 will also be forwarded to the CFGC for consideration. Further information about each MPA proposal is available on the MLPA website and in MarineMap.



For more detailed maps please visit: www.marinemap.org/marinemap

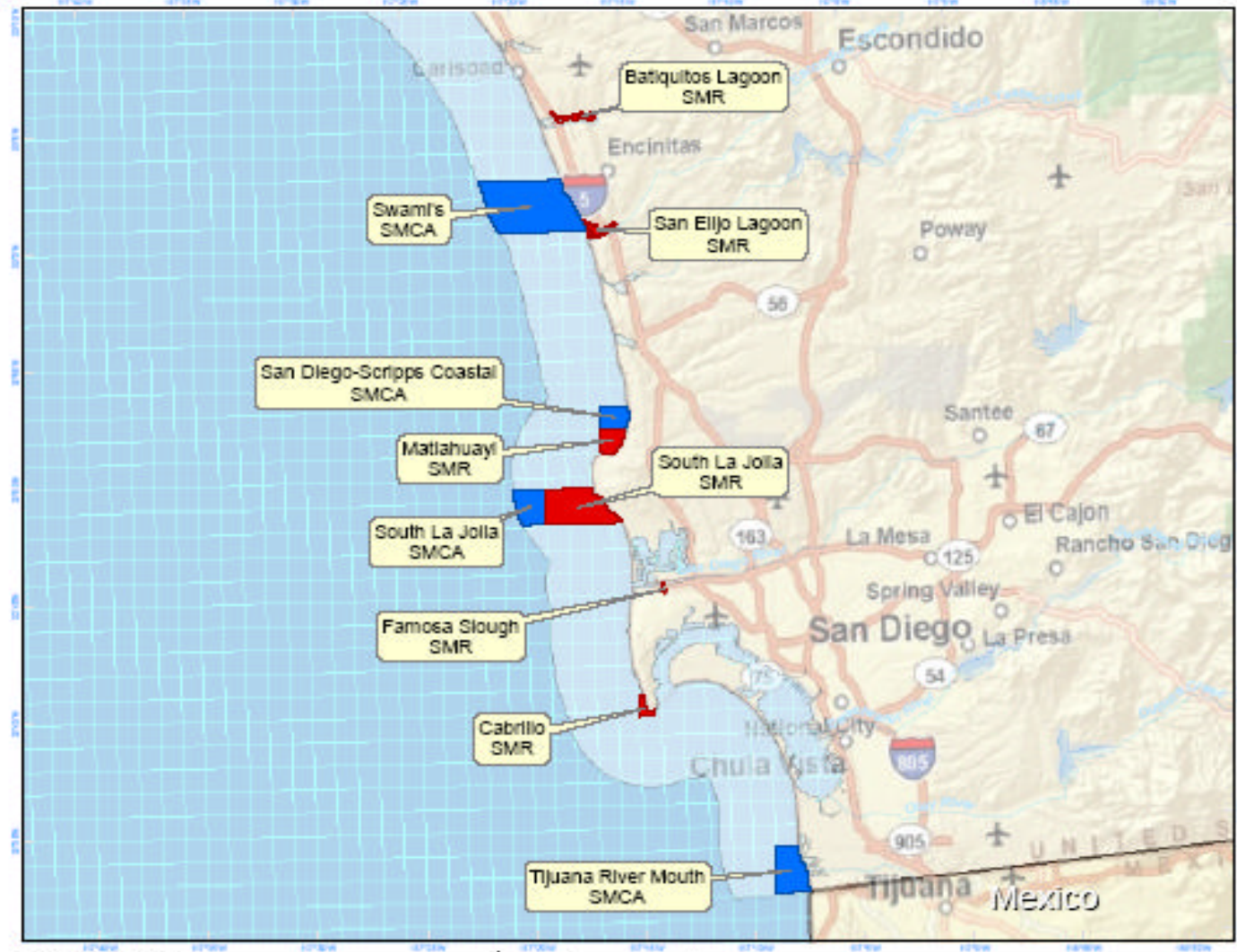
Projection Information:
 Name: NAD 1983 California Teale Albers
 Projection: Albers
 Datum: North American 1983



Compiled on: 11/15/2009
 Created By:
 Marine Map, Cartographic Division USCG

MLPA South Coast Study Region:

Subregion 5 - Agua Hedionda to California / Mexico Border



California Marine Life Protection Act (MLPA) Initiative

MLPA South Coast Integrated Preferred Alternative (IPA) MPA Proposal

Legend

- Pending Military Closure
- Proposed State Marine Conservation Area (SMCA)
- Proposed State Marine Park (SMP)
- Proposed State Marine Reserve (SMR)
- South Coast Study Region Boundary

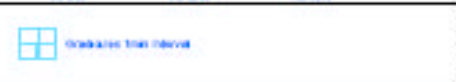
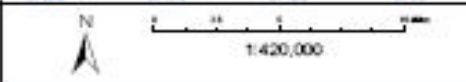
This marine protected area (MPA) proposal was unanimously adopted on November 10, 2009 by the MLPA Blue Ribbon Task Force (BRTF) as the MLPA South Coast Integrated Preferred Alternative (IPA) MPA Proposal to be recommended to the California Fish and Game Commission (CFGC).

The IPA integrates elements from three MPA proposals developed by the MLPA South Coast Regional Stakeholder Group (SCSRG). SCSRG MPA proposals 1, 2 and 3 will also be forwarded to the CFGC for consideration. Further information about each MPA proposal is available on the MLPA website and in MarineMap.



For more detailed maps please visit: www.marinemap.com/marinemap

Projection Information:
 Name: NAD 1983 California State Albers
 Projection: Albers
 Datum: North American 1983



Compiled on: 11/16/2009
 Created By: Marine Map, Cartographic Division UCSB

MLPA South Coast Study Region:

Subregion 6 - Northern Channel Islands



California Marine Life Protection Act (MLPA) Initiative

MLPA South Coast Integrated Preferred Alternative (IPA) MPA Proposal

Legend

- Pending Military Closure
- Proposed State Marine Conservation Area (SMCA)
- Proposed State Marine Park (SMP)
- Proposed State Marine Reserve (SMR)
- South Coast Study Region Boundary

This marine protected area (MPA) proposal was unanimously adopted on November 10, 2009 by the MLPA Blue Ribbon Task Force (BRTF) as the MLPA South Coast Integrated Preferred Alternative (IPA) MPA Proposal to be recommended to the California Fish and Game Commission (CFGC).

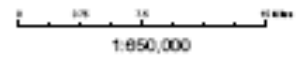
The IPA integrates elements from three MPA proposals developed by the MLPA South Coast Regional Stakeholder Group (SCSRG); SCSRG MPA proposals 1, 2 and 3 will also be forwarded to the CFGC for consideration. Further information about each MPA proposal is available on the MLPA website and in MarineMap.



For more detailed maps please visit: www.marinemap.com/marinemap

Projection Information:

Name: NAD 1983 California State Albers
 Projection: Albers
 Datum: North American 1983

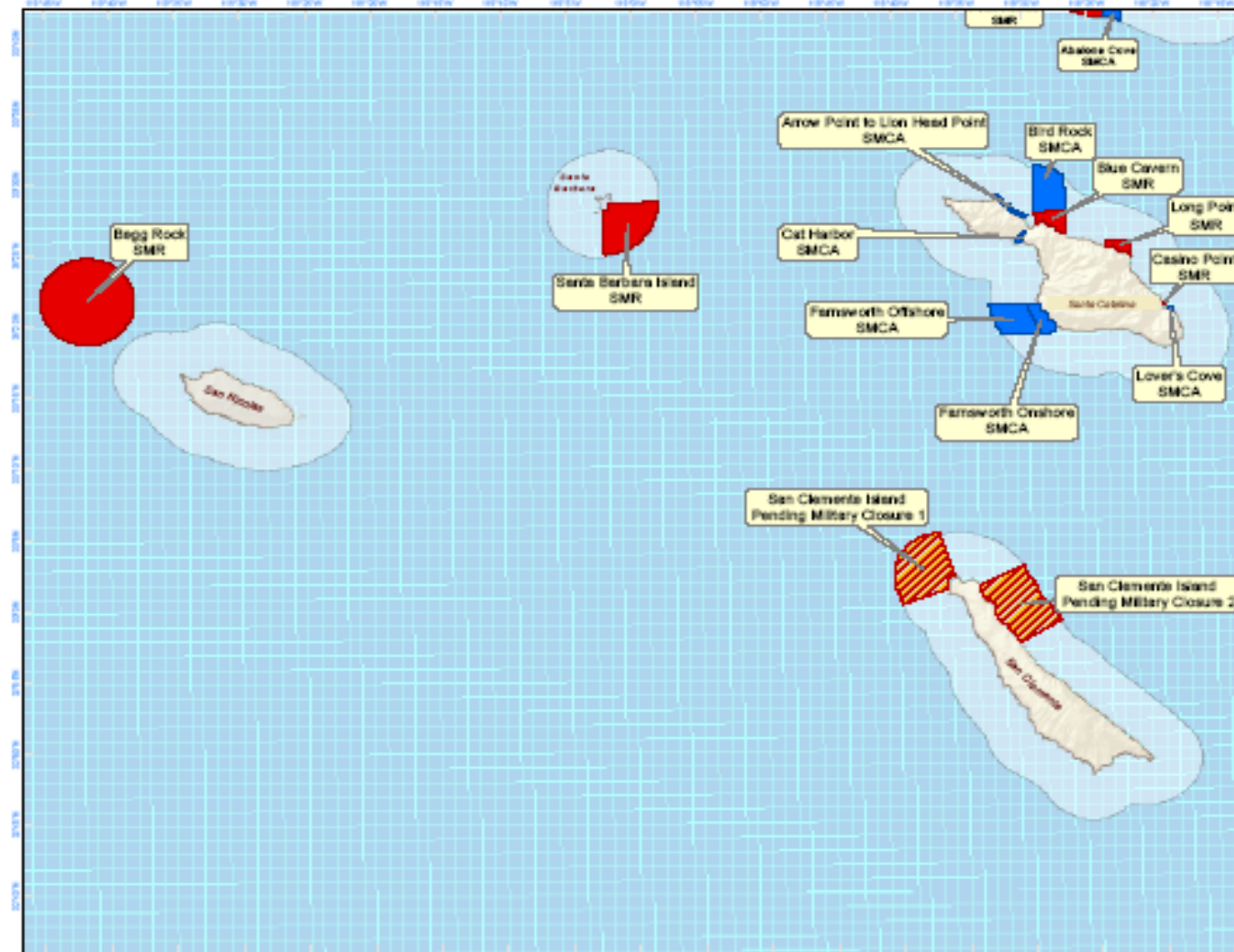


Compiled on: 11/16/2009

Created by: Marine Map, Cartographic Division UCSB

MLPA South Coast Study Region:

Subregion 7 - Southern Channel Islands



California Marine Life Protection Act (MLPA) Initiative

MLPA South Coast Integrated Preferred Alternative (IPA) MPA Proposal

- Legend**
- Pending Military Closure
 - Proposed State Marine Conservancy Area (SMCA)
 - Proposed State Marine Park (SMP)
 - Proposed State Marine Reserve (SMR)
 - South Coast Study Region Boundary

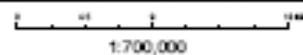
This marine protected area (MPA) proposal was unanimously adopted on November 10, 2009 by the MLPA Blue Ribbon Task Force (BRTF) as the MLPA South Coast Integrated Preferred Alternative (IPA) MPA Proposal to be recommended to the California Fish and Game Commission (CFGC).

The IPA integrates elements from three MPA proposals developed by the MLPA South Coast Regional Stakeholder Group (SCSRG); SCSRG MPA proposals 1, 2 and 3 will also be forwarded to the CFGC for consideration. Further information about each MPA proposal is available on the MLPA website and in MarineMap.



For more detailed maps please visit:
www.marine-map.com/marine-map

Projection Information:
 Name: NAD 1983 California State Albers
 Projection: Albers
 Datum: North American 1983



Compiled on: 11/17/2009
 Created by:
 Marine Map, Cartographic Division USCG



South Coast Adoption Timeline

- March 3, 2010: Commission meeting to give DFG guidance on developing regulatory options
 - DFG will draft regulatory documents based on guidance
- Apr or May 2010: Proposed regulations to be published (initiates public comment)
- Final Commission adoption expected in late 2010
- Parallel CEQA process will occur



North Coast: Planning Underway

- BRTF formed (7 members); first meeting was November 2009
- Science Advisory Team formed (21 members); first meeting was October 2009
- NC regional stakeholder group (NCRSG) formed
 - 32 members, including tribal representatives
 - First meeting was Feb 8-9, 2010
- Statewide Interest Group (SIG): nominations closed Feb 4, 2010



North Coast: Process & Timeline

3 rounds of developing MPA proposals:

- **Round 1** (External MPA arrays developed by community groups for NCRSG to consider): 8 were submitted Feb 2010
- **Round 2** (draft MPA proposals developed by NCRSG): Mar – May 2010
- **Round 3** (final MPA proposals developed by NCRSG): Jun – Sep 2010



For More Information...

- Website has been updated
(browse www.dfg.ca.gov/MLPA)