

SAC Challenge

Karen Mogus, State Water Board
Julia Dyer, Central Coast Water Board

18 October 2019



Overview

- A Confession
- Statewide Water Quality Control Planning and Implementation
- Central Coast Regional Water Quality Monitoring and Implementation
- A Commitment



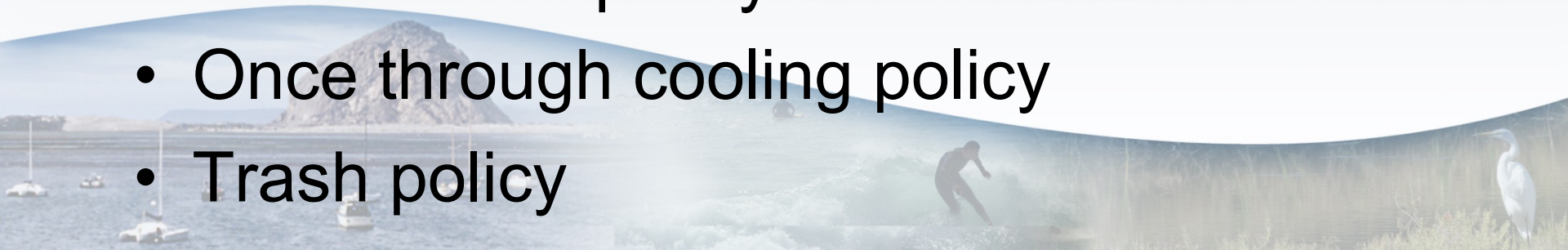
Marine Protected Areas Leadership Team - Workplan

- Ocean Plan periodic review
- Review ASBS and MPA monitoring plans, reports or workplans to identify overlaps in program components
- Work with the Water Quality Monitoring Council to develop unified interagency strategy to identify overlaps in monitoring
- Support research of sources of and impacts from ocean acidification



Statewide Ocean Plan (Water Quality Control Plan)

- Regulates discharge to the ocean by:
 - designating beneficial uses,
 - setting water quality objectives to protect the uses and
 - establishing an implementation plan to achieve the water quality objectives
- Desalination policy
- Once through cooling policy
- Trash policy



Ocean Plan Periodic Review 2019 – Draft Priorities

- Bacteria objectives for Water Contact Recreation
- Review exceptions and monitoring requirements for storm water and non-point source dischargers into ASBS
- Desalination implementation provisions
- Ocean acidification, hypoxia and climate change impacts
- Microplastics and microfibers
- Nutrients and objectionable aquatic growth water quality objectives



Designation of Areas of Special Biological Significance

- Designates 34 Areas of Special Biological Significance, 7 of which are on the Central Coast
- Discharge prohibition
- Any activity must not permanently degrade water quality or result in water quality lower than necessary to protect existing uses



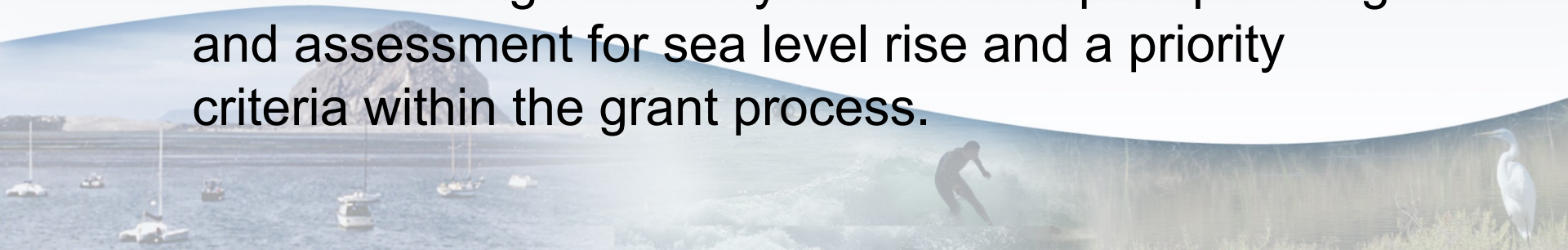
Surface Water Ambient Monitoring Program

- Assesses water quality in all of California's surface waters.
- Data publicly available through the California Environmental Data Exchange Network (CEDEN).



Central Coast Water Board Activities

- Central Coast Ambient Monitoring (CCAMP) – Rotational Watershed Monitoring and Monthly Coastal Confluence Monitoring. Data publicly available through CEDEN.
- CCAMP Funded Project - Applied Marine Sciences to obtain flow-proportioned load estimates for current use pesticides into Monterey Bay from the Pajaro and Salinas rivers.
- Climate Change – modify orders to require planning and assessment for sea level rise and a priority criteria within the grant process.



A Commitment

- Provide an update on the Sanctuary in the State Water Board's Executive Director's Report in 2020
- Offer briefings for Board members

