

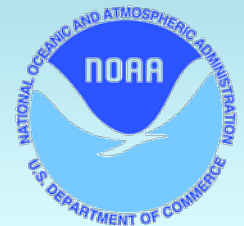
Sanctuaries and California Marine Protected Areas (MPAs)



Effective Implementation of the Marine Life Protection Act



Research • Education • Conservation • Stewardship



Background



- 23 of 29 central coast MPAs fall within the MBNMS
- 13 of 24 MPAs and all 6 Special Closures (vessel no-go zones) fall within the GFNMS
- Implementation activities fall within three basic categories:
 - Research and Monitoring
 - Education and Outreach
 - Compliance and Enforcement



Note: MPAs within GFNMS region are not effective until April 1, 2010

Research • Education • Conservation • Stewardship

Overview



- Both MBNMS and GFNMS are active partners with the State of California in implementing MPA networks.
- It is clear that no one agency has, itself, adequate resources to implement MPA networks.
- Our actions aid the state and are part of the contributions that many, not just the state and NOAA, are making.



NATIONAL MARINE
SANCTUARIES

Research • Education • Conservation • Stewardship

Research and Monitoring

MBNMS

- Participating in monitoring programs that benefit understanding of the effectiveness of central coast MPAs
 - Water Quality Monitoring
 - Kelp Forest Surveys
 - Black Abalone Monitoring
 - Nearshore Characterization
 - Fish surveys of Carmel Bay MPAs
- Providing an average of 57 days at sea annually
- Removing lost fishing gear in the Portuguese Ledge SCMA
- Working with SeaDoc Society on future fishing gear removal projects



NATIONAL MARINE
SANCTUARIES

Research • Education • Conservation • Stewardship

Research and Monitoring

GFNMS

- Participating in monitoring programs that benefit understanding of the effectiveness of central coast MPAs
 - Rocky Shores
 - Offshore
 - shoreline
- Coordinating with the US Fish and Wildlife Service on monitoring the effectiveness of Special Closures



NATIONAL MARINE
SANCTUARIES

Research • Education • Conservation • Stewardship

Education and Outreach

MBNMS

- Assisted with the design and implementation of 8 signs for four new MPAs along the Monterey Bay and Pacific Grove shoreline
- Assistance with development of new DFG brochures
- Bilingual curriculum and outreach trips hosted by MBNMS's MERITO program to:
 - the MPA exhibit at the Pacific Grove Museum
 - Asilomar SMR
 - Elkhorn Slough SMR
 - Point Lobos SMR
 - Piedras Blancas SMR



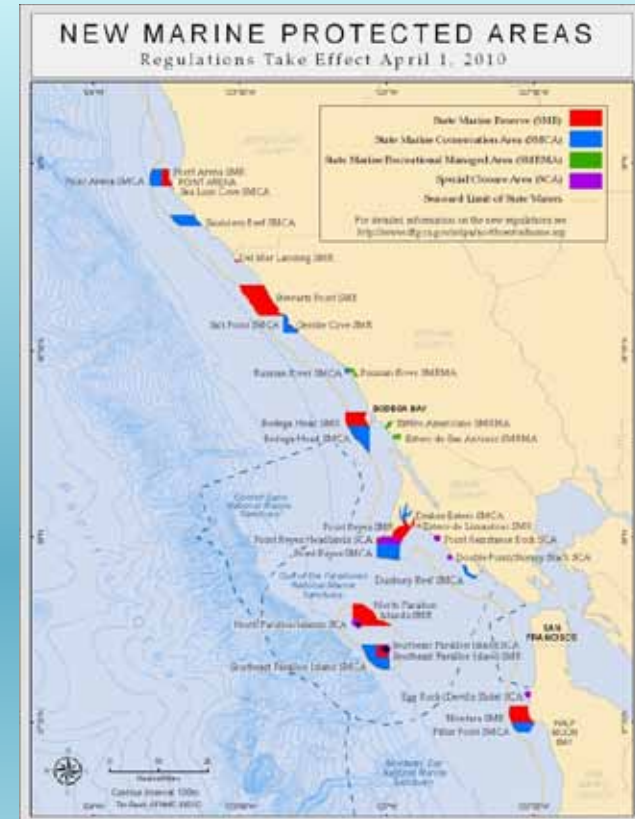
NATIONAL MARINE
SANCTUARIES

Research • Education • Conservation • Stewardship

Education and Outreach

GFNMS

- Developed initial outreach product for use by Department of Fish and Game at the Fishermen's Expo
- Developed initial outreach product for use by Fitzgerald Marine Reserve



- Participating in coordinated effort for integrated outreach materials
- Through the *Command* oil spill funds, providing funding for boater outreach materials

Research • Education • Conservation • Stewardship

Compliance and Enforcement

MBNMS and GFNMS

- Organize local law enforcement technical advisory committees comprised of federal, state, and local government authorities
- Coordinate patrols and vessel surveys on the NOAA Twin Otter and R/V Fulmar
- Developed and distributed an aircraft patrol guide to NOAA Office of Law Enforcement and the Coast Guard
- Developed a buoy plan and secured funding to demarcate special closures



MBNMS Assistance to date (since '07)

- 175 days at sea to monitor, map, characterize, and patrol MPAs
- An average of \$476,000 annually in staff time and assets
- Development of GIS, photo/video, and characterization tools



Research • Education • Conservation • Stewardship