



EBM Initiative Update

Paul Michel, Superintendent
Monterey Bay National Marine Sanctuary

SAC Meeting, Salinas
April 19, 2012

“Post EBMI” Priorities For 2012

- 1) Natural Resource Assessment – June
- 2) Integrated Ecosystem Assessment – Thru Dec.
- 3) EFH Review Process – December

MBNMS

Natural Resource Assessment

Purpose

- 1) to identify and compile sources of regional information
- 2) describe natural resources and processes in offshore marine waters of the Sanctuary to inform MBNMS management

Marine Sanctuaries Conservation Series ONMS-**07-08**



**The Natural Resources of the Monterey Bay
National Marine Sanctuary:**

MBNMS

Natural Resource Assessment

Content

- Reviews available information by habitat, communities, and ecological processes in offshore waters (e.g., productivity)
- Identifies data layers for GIS tools and products

Marine Sanctuaries Conservation Series ONMS-***

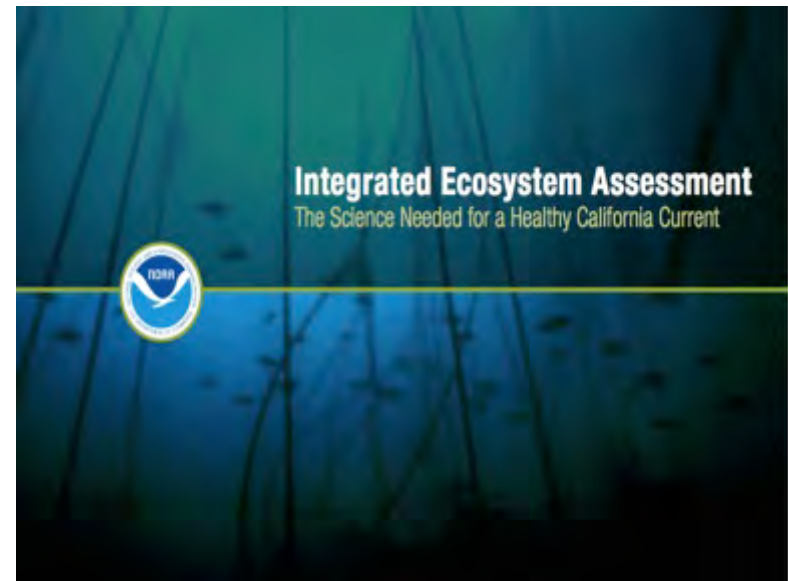


The Natural Resources of the Monterey Bay
National Marine Sanctuary:

NOAA's Integrated Ecosystem Assessment

Status of the California Current and MBNMS

- Evolving tool to synthesize and analyze scientific information & present it in a manner that informs management decisions
- Evolving to help resource managers understand the status and health of the ocean and how various management actions might influence those factors.



NOAA's IEA


Producing a web-based, user friendly, interactive dynamic report

- Creating a user-friendly website
- Creating a MBNMS specific section
- Click on pieces of interest by indicator and status and trends
- Graphical representation of different real and potential management scenarios



NOAA's CC-IEA Communications Products

1. Website
2. Webinars
3. Videos
4. Reports and brochures



NOAA FISHERIES:
Office of Science & Technology

Directorate | Fisheries Statistics | Assessment & Monitoring | Economics & Social Analysis | Science Information | Marine Ecosystems

NOAA's Integrated Ecosystem Assessment Program

[IEA Quick Links](#)

- [Home](#)
- [California Current Regional Ecosystem](#)
- [Gulf of Mexico Regional Ecosystem](#)
- [Northeast Shelf Regional Ecosystem](#)
- [Pacific Island Regional Ecosystem](#)
- [Alaska Complex Regional Ecosystem](#)

[Partners](#)


[FAQ](#)

[Contact Us](#)

[Select Publications](#)

The many faces of ecosystem-based management: Making the process work today in real places

Integrated Ecosystem



California Current

The California Current (CC) is known for strong seasonal upwelling that yields local areas of high productivity capable of supporting a wide variety of important commercially harvested shellfish and fish as well as sea birds and large marine mammals. Interannual variability in this system is influenced by two main climate drivers, the El Niño Southern Oscillation and the Pacific Decadal Oscillation. Health and productivity of this system is affected by commercial and recreational fishing, pollution, habitat degradation, shoreline alteration, logging, agriculture, urbanization, grazing, and energy production. The California Current Ecosystem (CCE) is the first in eight of the USA's Large Marine Ecosystems (LMEs) to implement NOAA's Integrated Ecosystem Assessment (IEA) program.

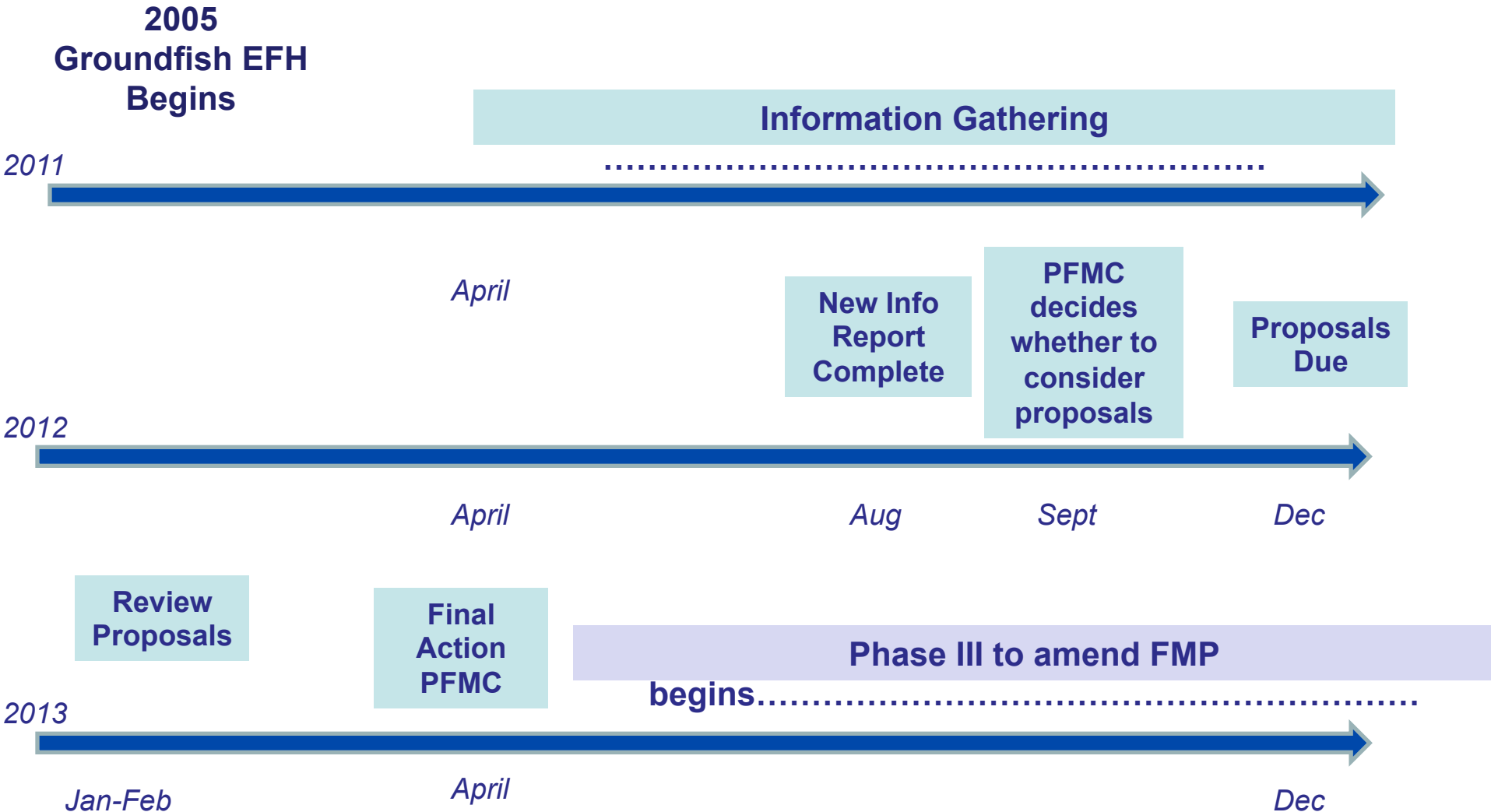
Source: www.lme.noaa.gov and Northwest Fisheries Science Center

MBNMS Goals for engaging in EFH Review

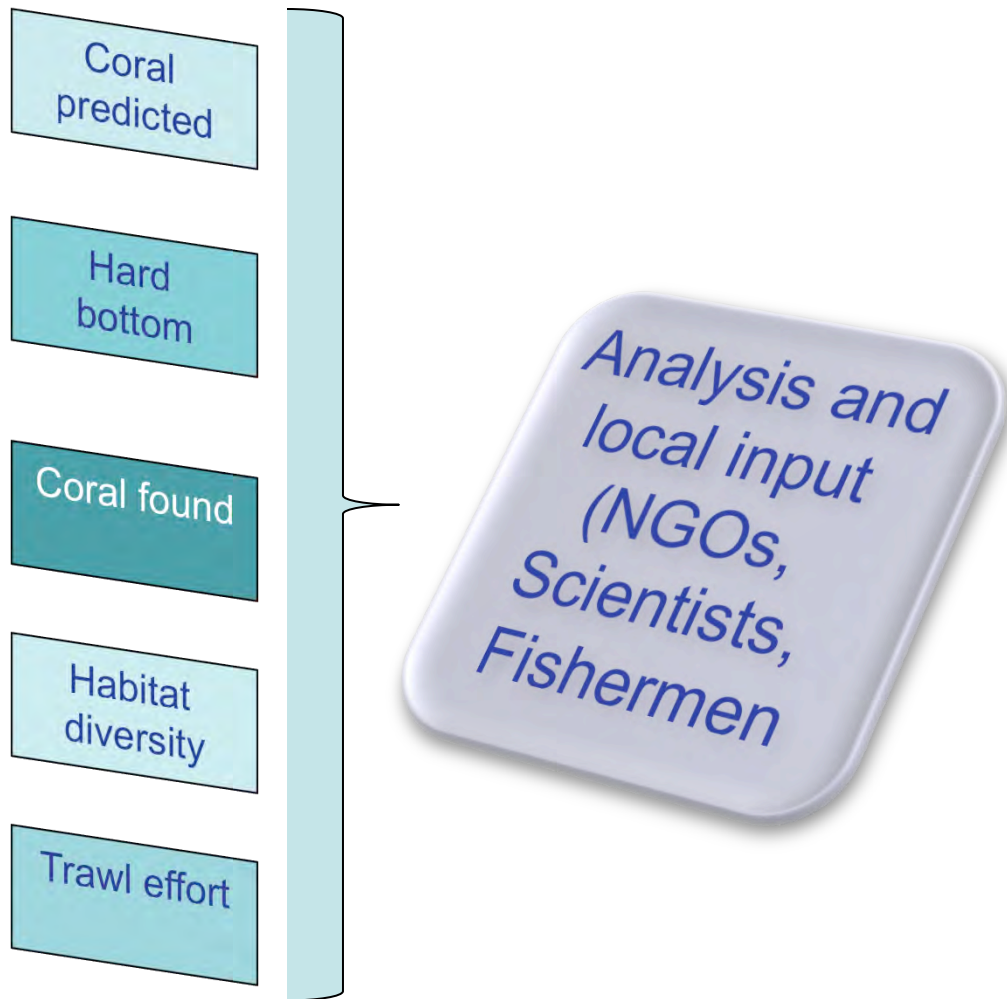
- 1) Achieve Ecosystem-Based Management goals
 - Facilitate sustainable uses
 - Protect unique/rare features
- 2) Address conservation and multiple use needs
- 3) Refine EFH boundaries using updated information and local input
- 4) Engage in PFMC Process



Pacific Fishery Management Council Groundfish EFH Review Timeline (estimated)



MBNMS will synthesize the best available information



- Analysis of best available scientific information
- Incorporate additional local input
- GIS Layers

MBNMS Seeks Additional Local information on....

- Locations of benthic habitat essential to groundfish
- Locations of benthic habitat that are unique, rare, remarkable
- Locations of areas that are currently or historically of interest to trawl and fixed gear fleets
- Locations of interest for long term research or hard bottom habitat and indicator species

National Marine Sanctuaries
National Oceanic and Atmospheric Administration



NATIONAL MARINE
SANCTUARIES

MONTEREY BAY

<http://montereybay.noaa.gov>