



Marine Life Protection Act

Update

Monterey Bay National Marine Sanctuary Advisory Council Meeting

October 18, 2012

Cambria, CA

Christine Pattison

California Department of Fish and Game



Overview

Statewide Update

- ✧ MPA Outreach & Education

- ✧ Monitoring


Central Coast Symposium

Scientific Collecting in MPAs





Outreach and Education

-  Informing the Public
 - * Website - old & new





Outreach and Education

 Informing the Public

✧ Regional MPA guides






Outreach and Education

Informing the Public

- ✧ Partner Outreach Materials

-  Creating an Inventory

- ✧ Department name change





Outreach and Education



Partnership updates:

- ✧ MPA Watch - DFG Partnerships Workgroup
- ✧ Monterey Bay Sanctuary Foundation - MOU pending



DFG Marine Region:

New MPA Outreach Coordination Project

- ✧ Outreach product review
- ✧ Partnership coordination
- ✧ Outreach product development



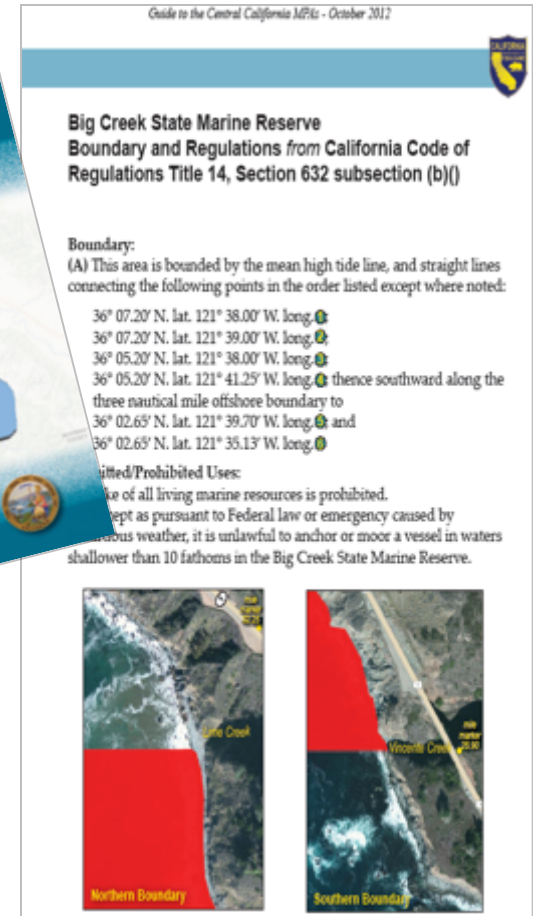
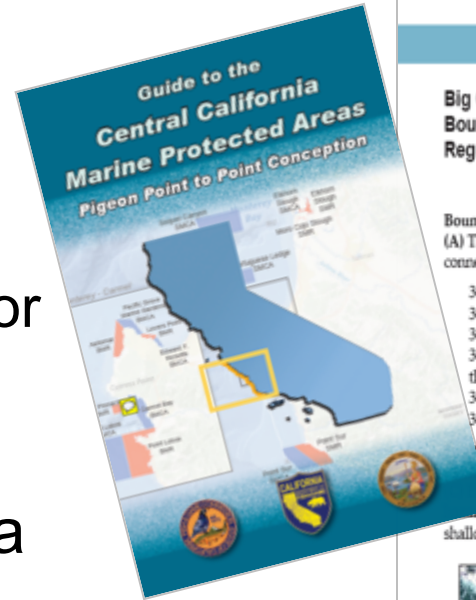
Under Development:

- ✧ Partnership guide
- ✧ Long-term statewide strategy





Central Coast Outreach Update



DRAFT Guide to SAC

- ★ Please provide suggestions for improvements of landmark locations & descriptions.

Guide to the Central California MPAs - revised & updated

- ★ Satellite imagery replaces nautical chart
- ★ Shoreline boundary images added
- ★ Landmarks displayed

* **New images:**

boundaries & landmarks



Central Coast Outreach Update

Guide to the Central California MPAs - October 2012

Guide to the Central California MPAs - October 2012

Data Updates & Improvements

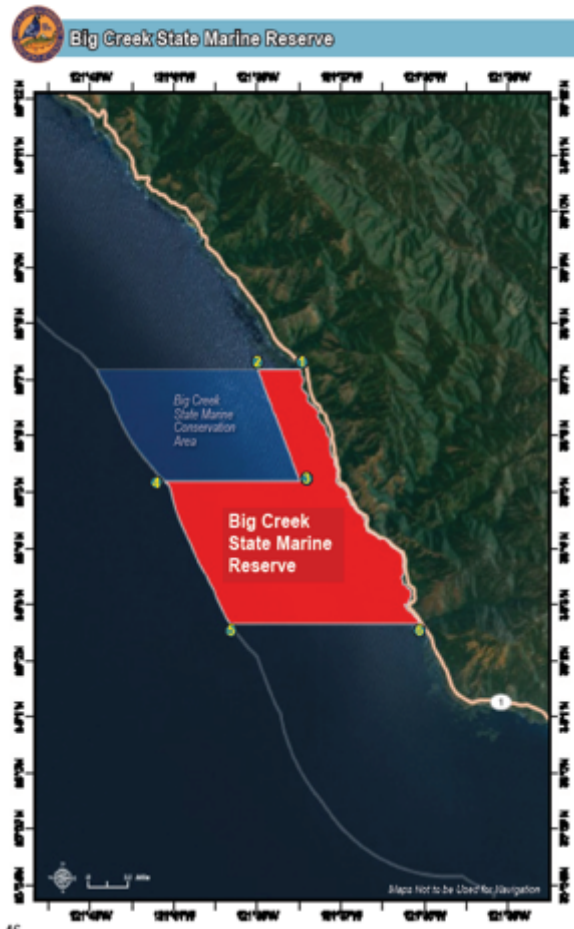
★ Improved mapping technology:

Scale in 2005:
1:24,000

Scale in 2012:
1:1,000

★ “Mean high tide line” more accurately mapped for coastal shoreline and estuary boundaries

★ Boundaries **not** changed; just more accurately imaged



Big Creek State Marine Reserve
Boundary and Regulations from California Code of Regulations Title 14, Section 632 subsection (b)(1)

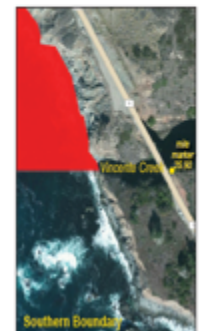
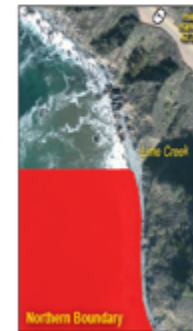
Boundary:

(A) This area is bounded by the mean high tide line, and straight lines connecting the following points in the order listed except where noted:

- 36° 07.20' N. lat. 121° 38.00' W. long.
- 36° 07.20' N. lat. 121° 39.00' W. long.
- 36° 05.20' N. lat. 121° 38.00' W. long.
- 36° 05.20' N. lat. 121° 41.25' W. long. thence southward along the three nautical mile offshore boundary to
- 36° 02.65' N. lat. 121° 39.70' W. long. and
- 36° 02.65' N. lat. 121° 35.13' W. long.

Permitted/Prohibited Uses:

- (B) Take of all living marine resources is prohibited.
- (C) Except as pursuant to Federal law or emergency caused by hazardous weather, it is unlawful to anchor or moor a vessel in waters shallower than 10 fathoms in the Big Creek State Marine Reserve.





Cambria MPA Dual Designation

Cambria MPA has two overlapping MPA designations:

- State Marine Conservation Area in 2007 by the Fish and Game Commission; *and*
- State Marine Park in 2010 by the California State Park and Recreation Commission
- Consistency on maps is needed to display both designations.

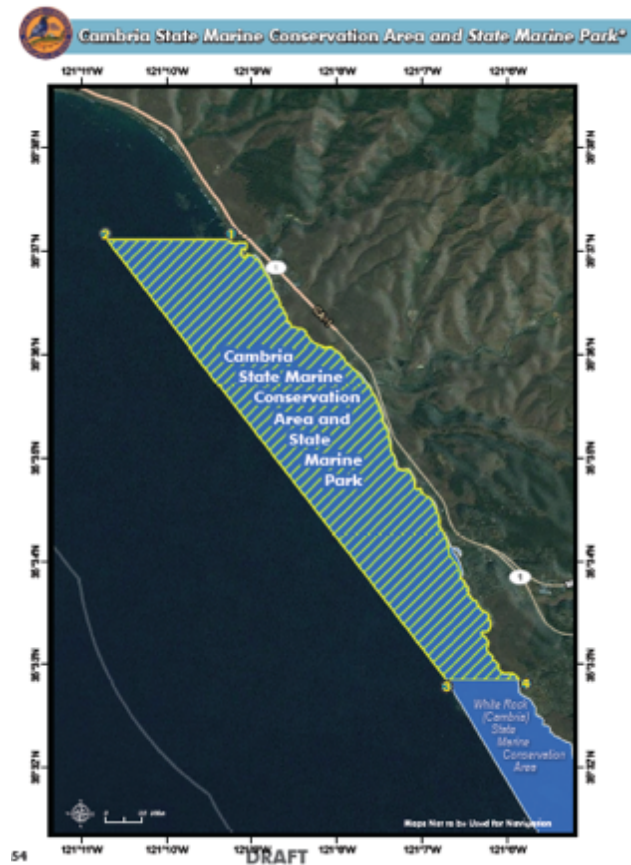
Version - Draft Guide:

Guide to the Central California MPAs - October 2012



Proposed display:

Guide to the Central California MPAs - October 2012

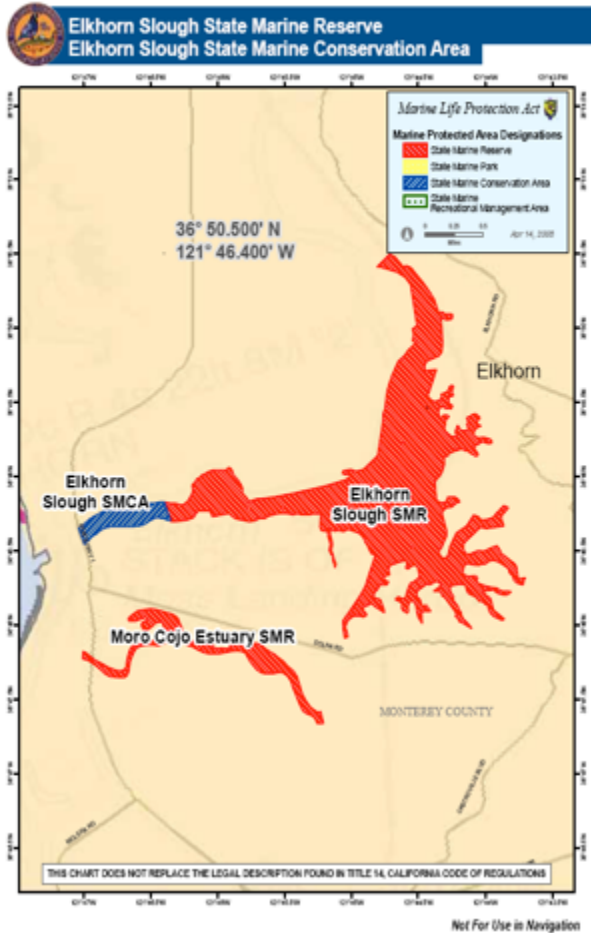




Elkhorn Slough Improved Mapping

Old Version

Guide to the Central California MBAs - April 2012



New Version

Guide to the Central California MBAs - October 2012

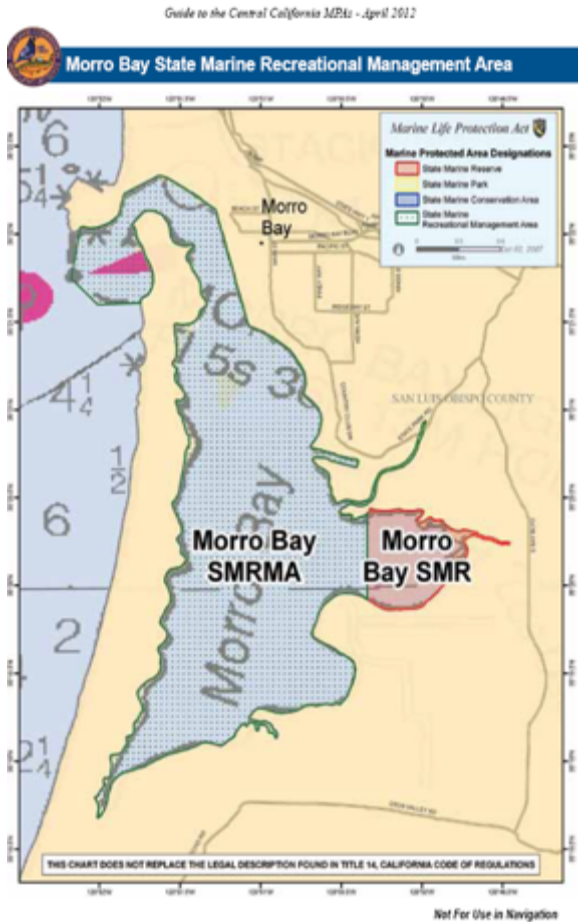




Morro Bay Improved Mapping

Old Version

New Version





MPA Monitoring - Update

Monitoring Plans - Ecosystem focus

- ✧ Central Coast - Monitoring results to be released in 2013
- ✧ North Central Coast - baseline near completion
- ✧ South Coast - Collecting data
- ✧ North Coast - Planning in progress; Request for Proposal expected in early 2013
- ✧ Statewide Plan – To be determined

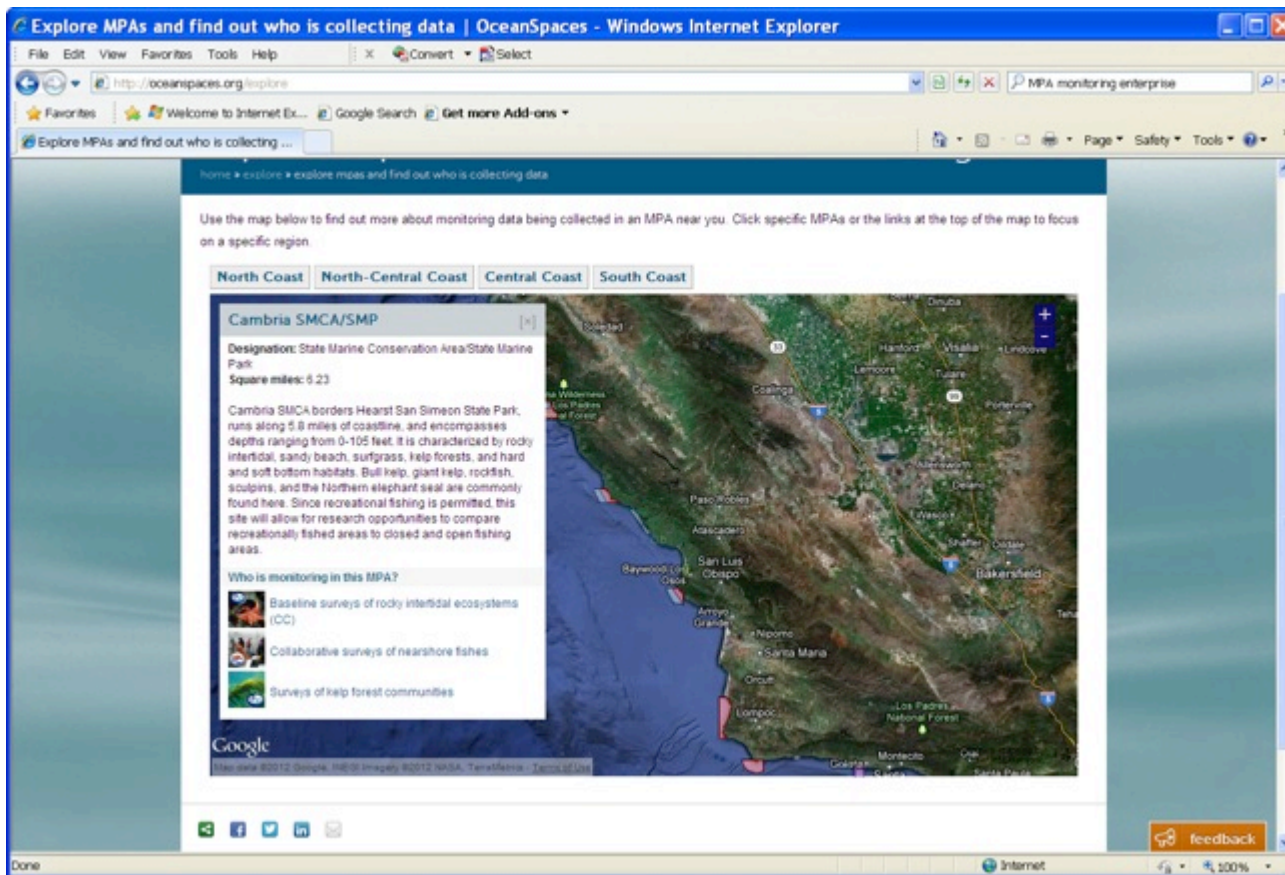




MPA Monitoring - Online




New MPA monitoring site:





Central Coast MPA Symposium

 5 year anniversary: 2007-2012

 “State of California Central Coast” symposium Feb 28 - Mar 1, 2013 in Monterey

✧ Submitted abstracts under review

 Fish and Game Commission to consider results at Fall 2013 meeting

✧ DFG will present symposium results and possible next steps for MPA management

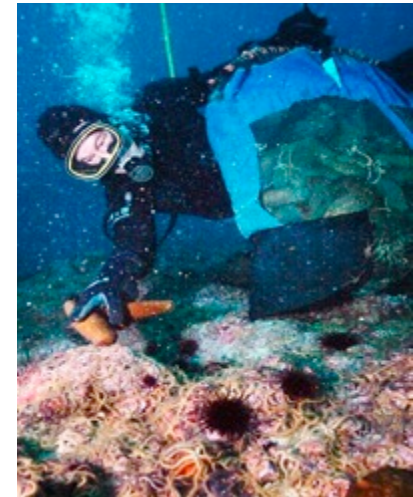
 Monitoring Plan to be updated





Scientific Collecting in MPAs: How much is too much?

- 🐟 DFG is working with Ocean Science Trust's Science Advisory Team
 - ✧ Developing a Risk Assessment Tool to evaluate:
 - 🐟 Ecological risk of scientific take in a MPA
 - 🐟 Cumulative effects from research, educational, and/or restoration projects in a MPA
- 🐟 DFG will use this tool to help make decisions on issuing Scientific Collecting Permits in individual MPAs





Contact Information

www.dfg.ca.gov/MLPA

for maps, guides, MarineBIOS, MPA Mobile

or

Email: MLPAComments@dfg.ca.gov

Christine Pattison CPattison@dfg.ca.gov

