

# Ship Strikes in California Sanctuaries



Joint Advisory Council  
Meeting  
August 21, 2013



# The Sanctuary Advisory Councils formed a Joint Working Group



## Co-Chairs

Lance Morgan; CBNMS SAC  
Jackie Dragon; GFNMS SAC

## Working Group Members

John Berge, Pacific Merchant Shipping Association  
John Calambokidis, Cascadia Research Collective  
Frances Gulland, The Marine Mammal Center  
Michael Jasny, Natural Resources Defense Council  
Carol Keiper, Oikonos Ecosystem Knowledge  
Captain Bill Mahoney, APL Ltd.  
Kathy Metcalf, Chamber of Shipping of America

## Working Group Staff

Leslie Abramson, GFNMS  
Michael Carver, CBNMS

## Technical Experts

Monica DeAngelis, NOAA NMFS  
Leila Hatch, Stellwagen Bank NMS  
John Hildebrand, Scripps  
Jaime Jahncke, PRBO Conservation Science  
Kevin Krick, APL Ltd.  
LT Lucas Mancini, U.S.Coast Guard, D.11  
Megan McKenna, Marine Mammal  
Commission  
Chris Miller, Naval Post Graduate School  
Ingrid Overgard, Int. Ocean Noise Coalition  
Elizabeth Petras, , NOAA NMFS  
CDR Kiley Ross, U.S. Coast Guard District 11  
Brandon Southall, Southall Associates  
Mike VanHouten, U.S. Coast Guard, D.11

# The Joint Working Group produced this report of recommendations



## VESSEL STRIKES AND ACOUSTIC IMPACTS



## GULF OF THE FARALLONES AND CORDELL BANK NATIONAL MARINE SANCTUARIES

*Report of a Joint Working Group of the Gulf of the Farallones and Cordell Bank  
National Marine Sanctuaries Advisory Councils*

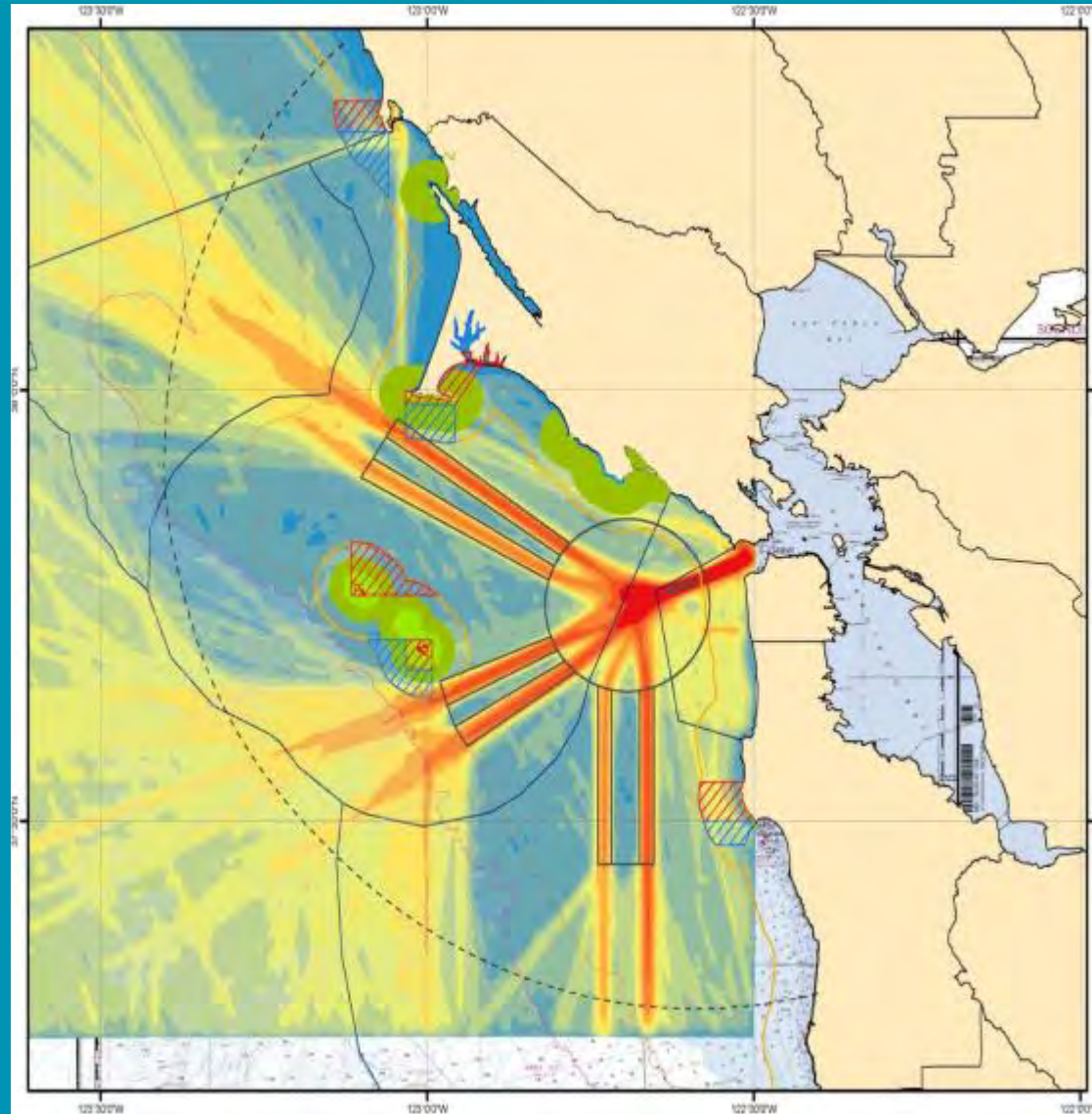
[http://farallones.noaa.gov/manage/pdf/sac/12\\_06/jwg\\_strikes.pdf](http://farallones.noaa.gov/manage/pdf/sac/12_06/jwg_strikes.pdf)

June 2012

# Modification to the shipping lanes:



## Management Recommendation #1

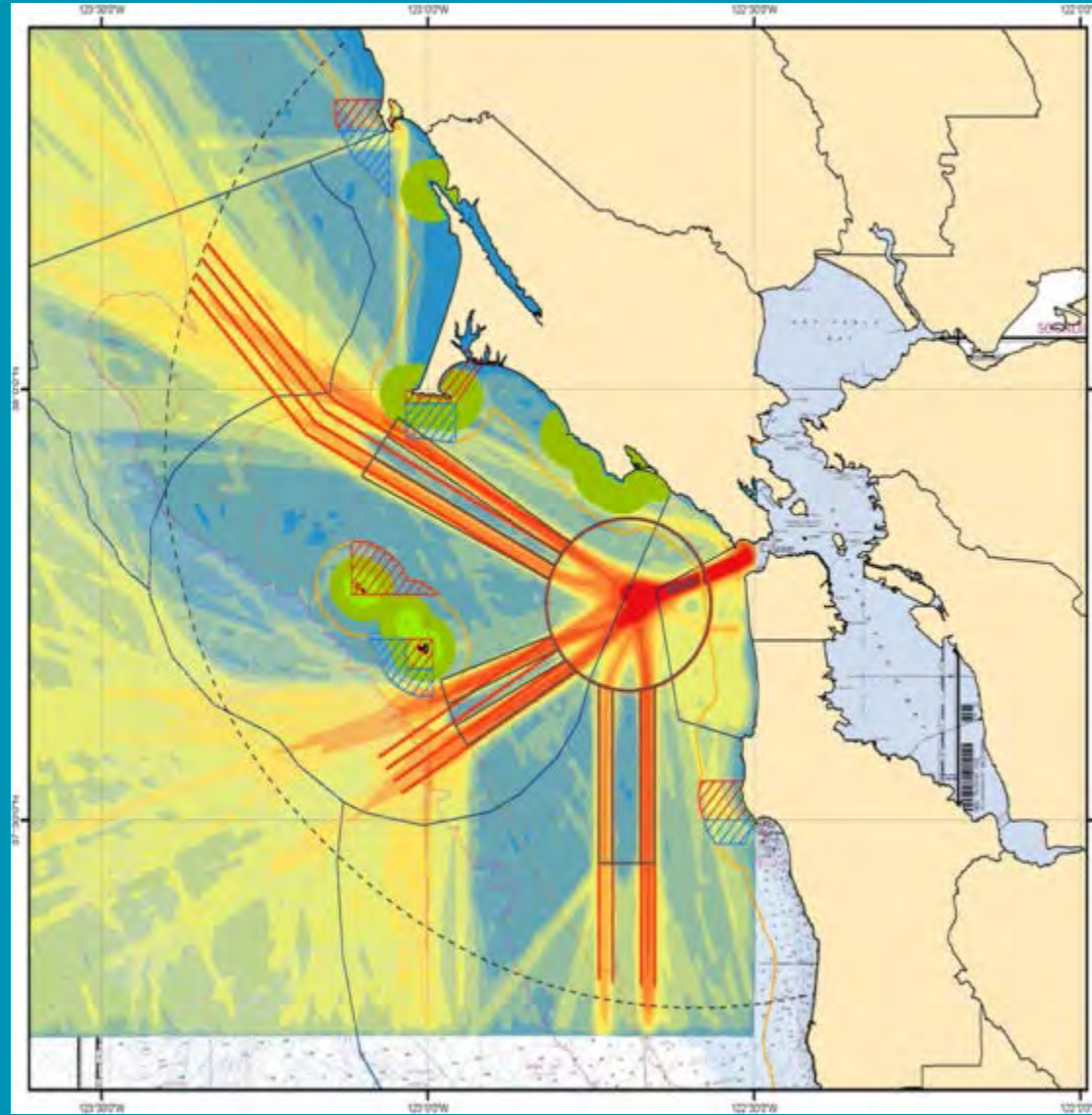




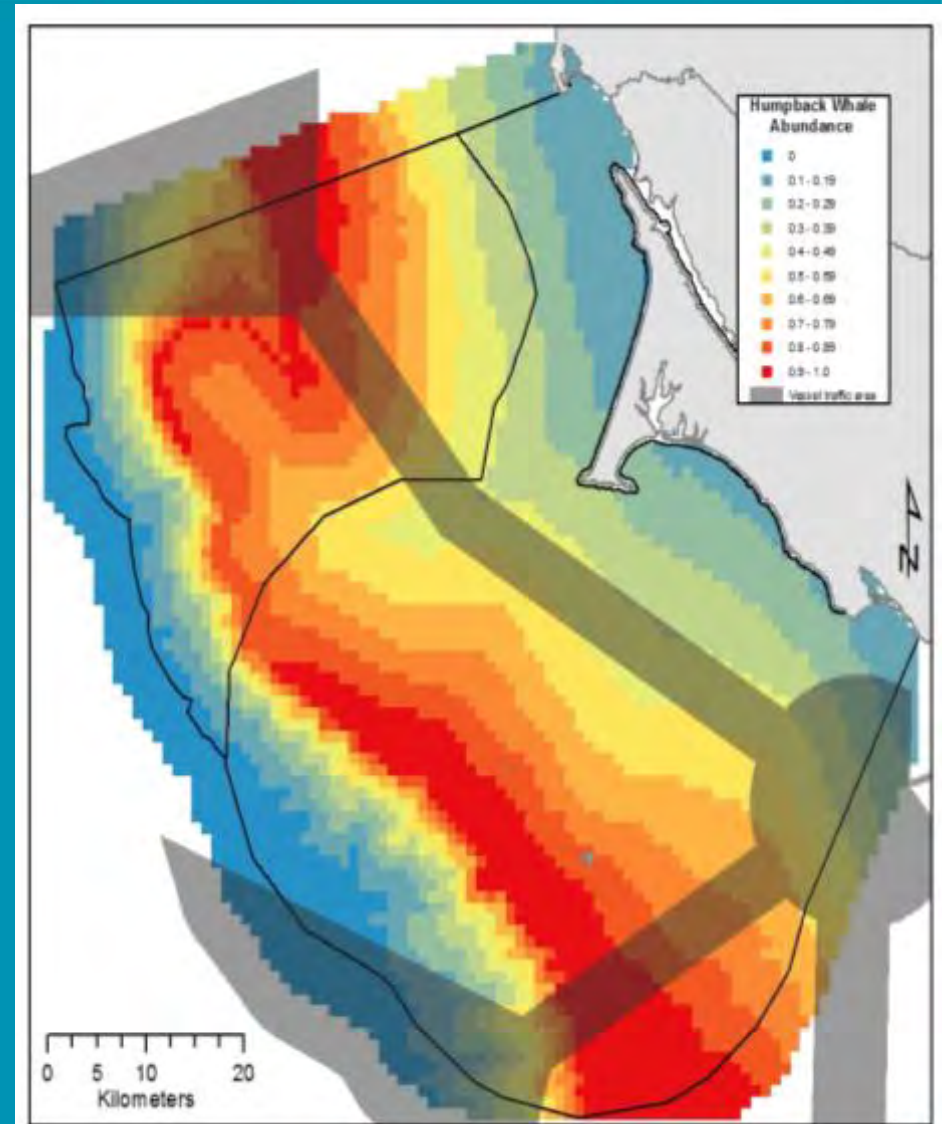
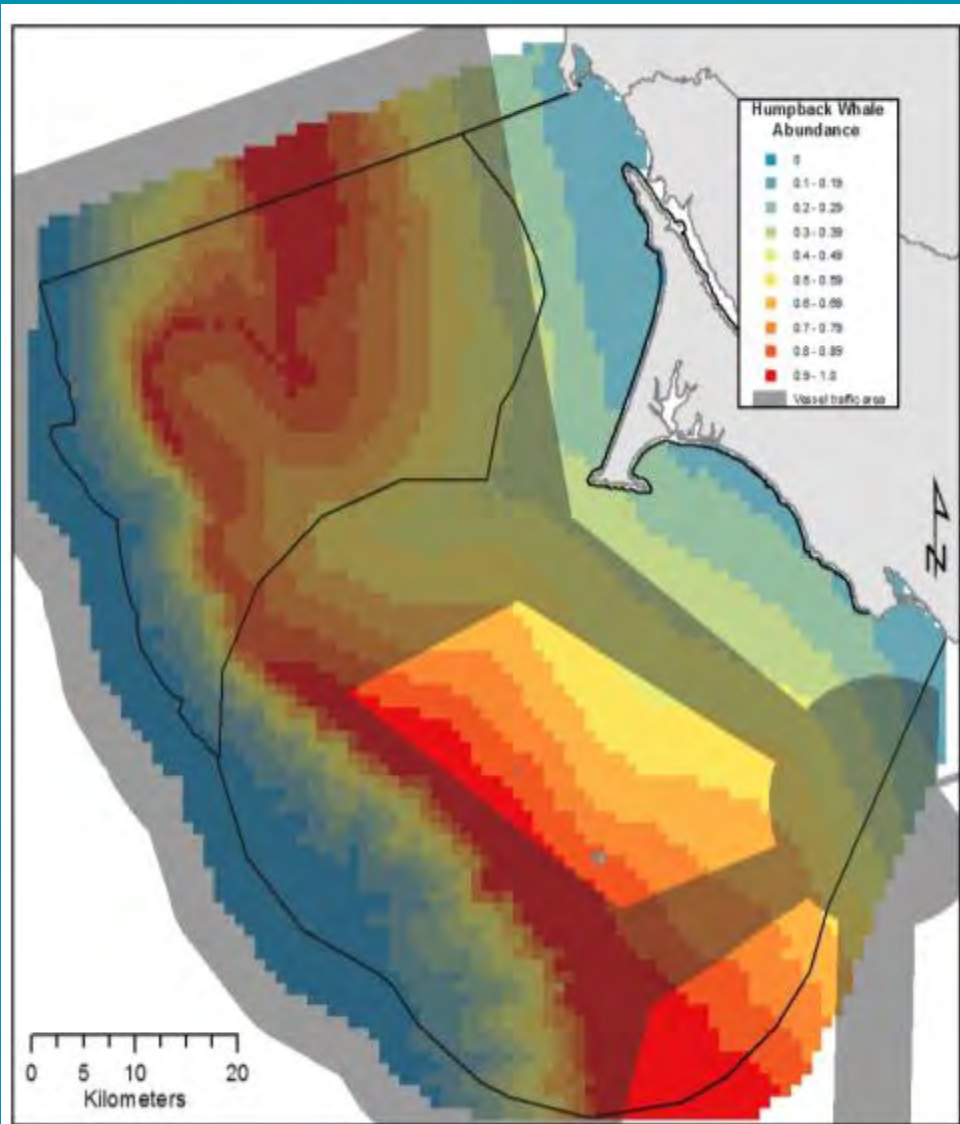
# Modification to the shipping lanes:



Management  
Recommendation #1



# Reduce conflict between vessels and preferred whale habitat





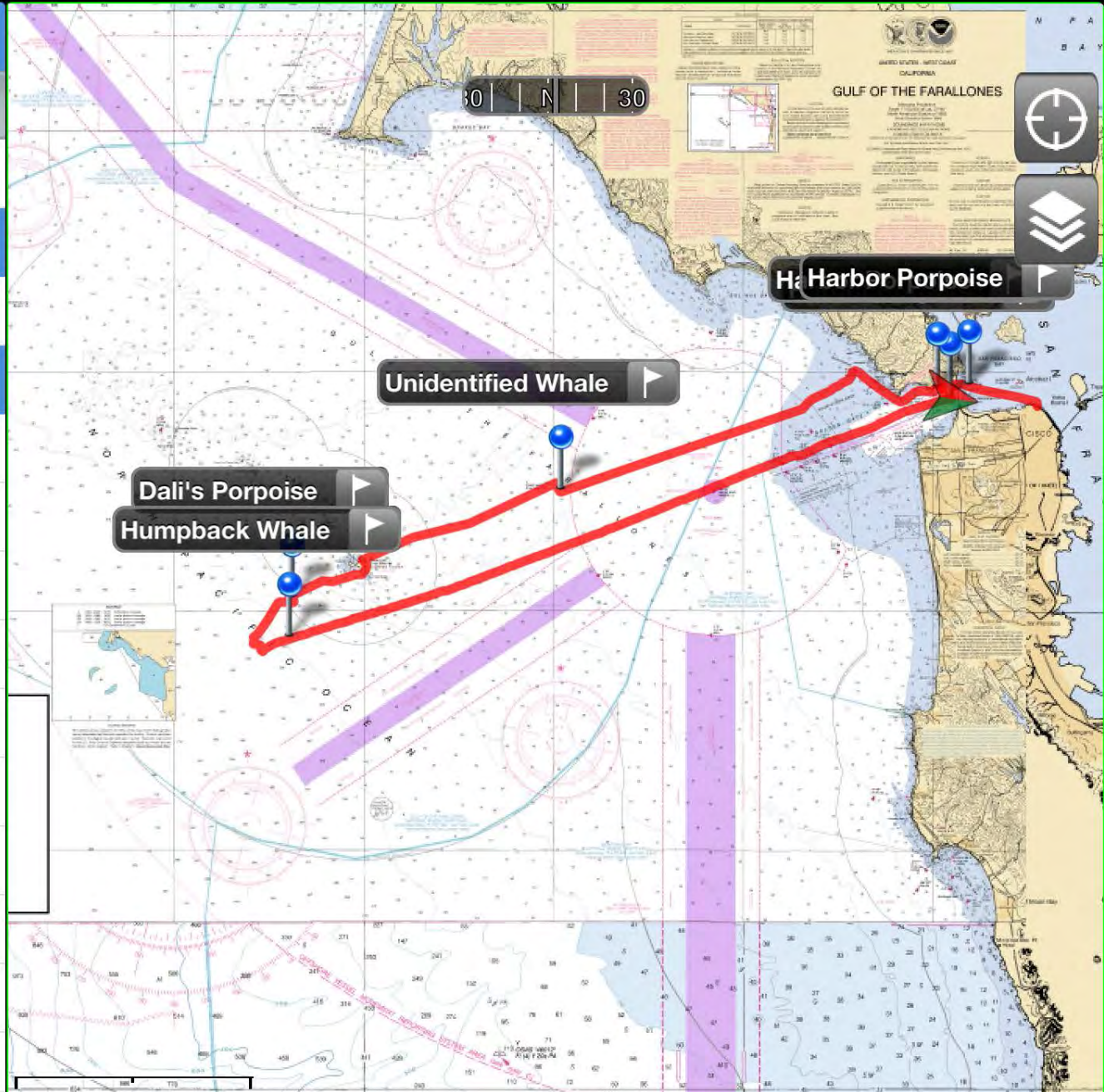
# Real-time whale sighting and monitoring network:



## Management Recommendation #2

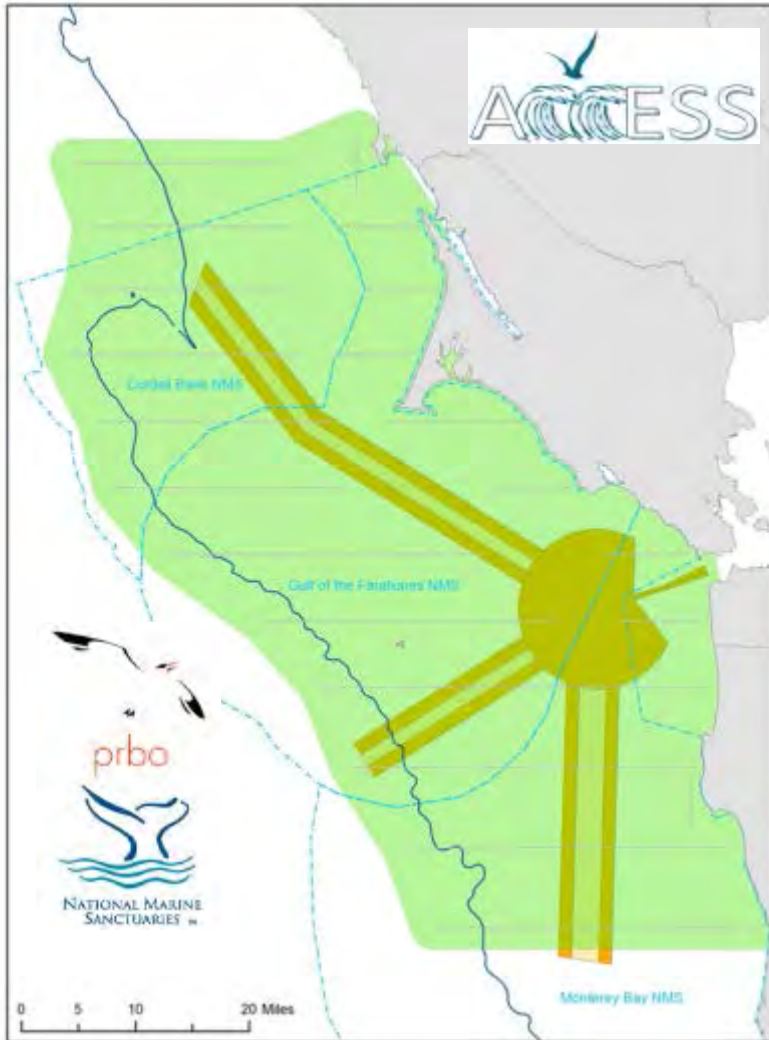


- Sightings **Sighting**
- Harbor Porpoise 02:53:29 PM
- Sighting Details >
- Behaviors +
- Photo Logs +

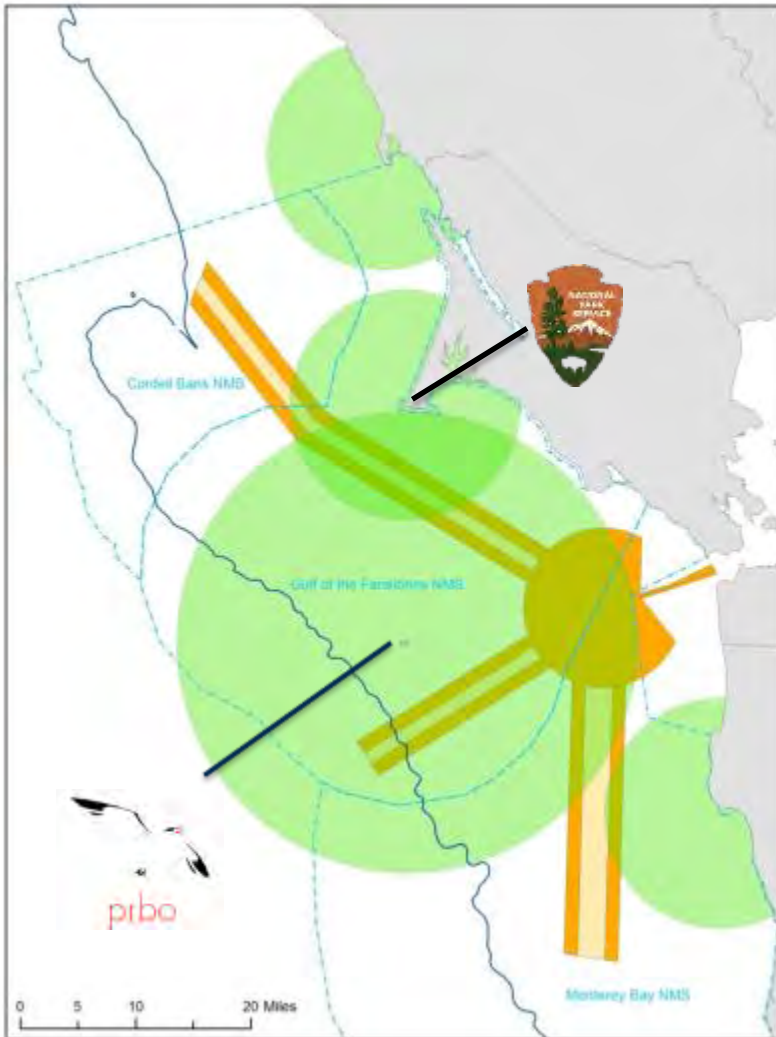




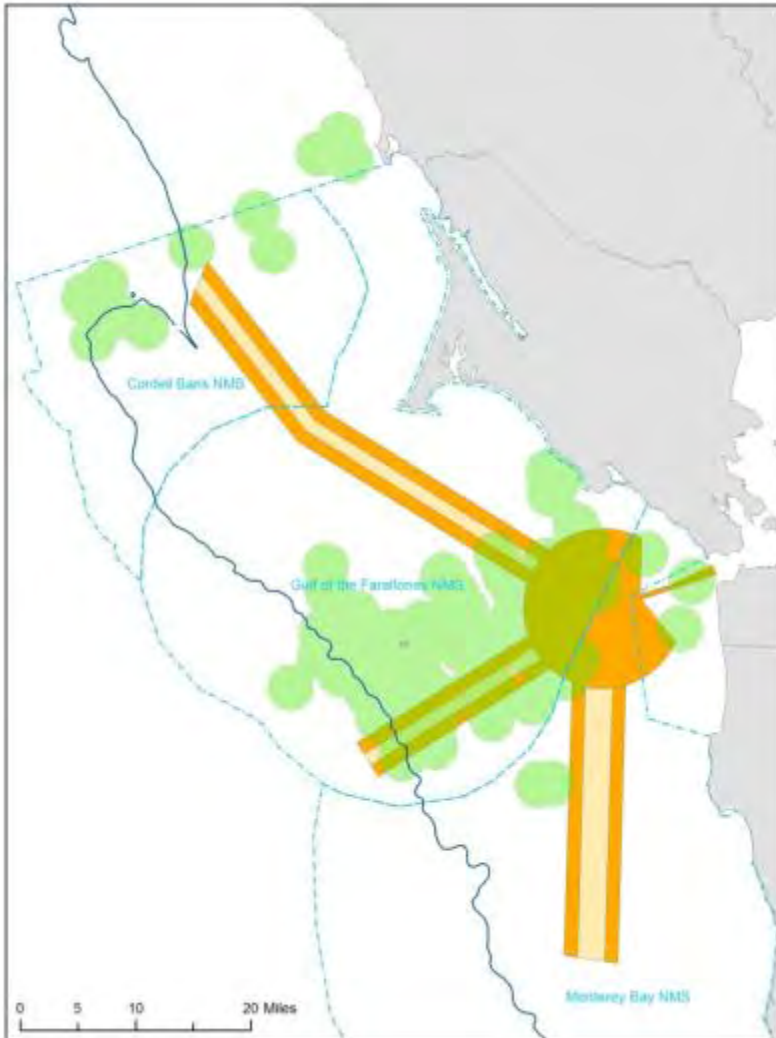
# Real-time whale sighting and monitoring network:



# Real-time whale sighting and monitoring network:

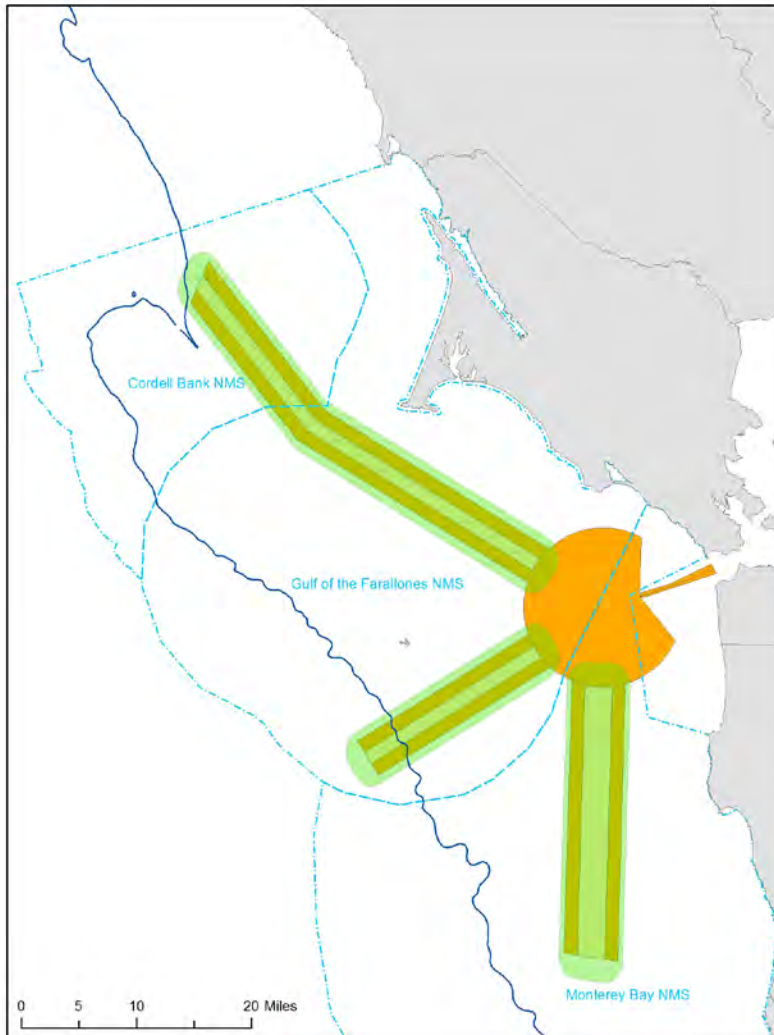


# Real-time whale sighting and monitoring network:



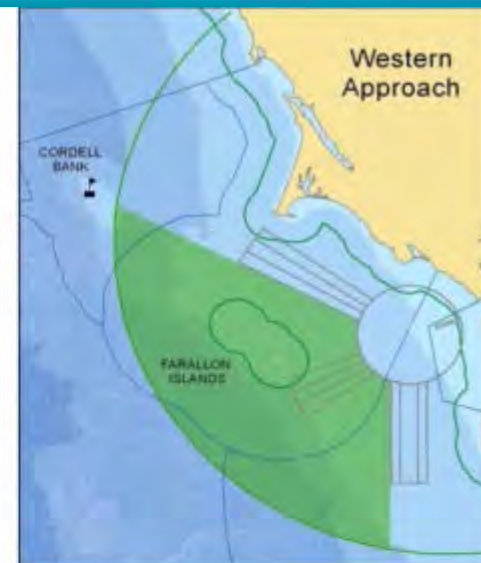
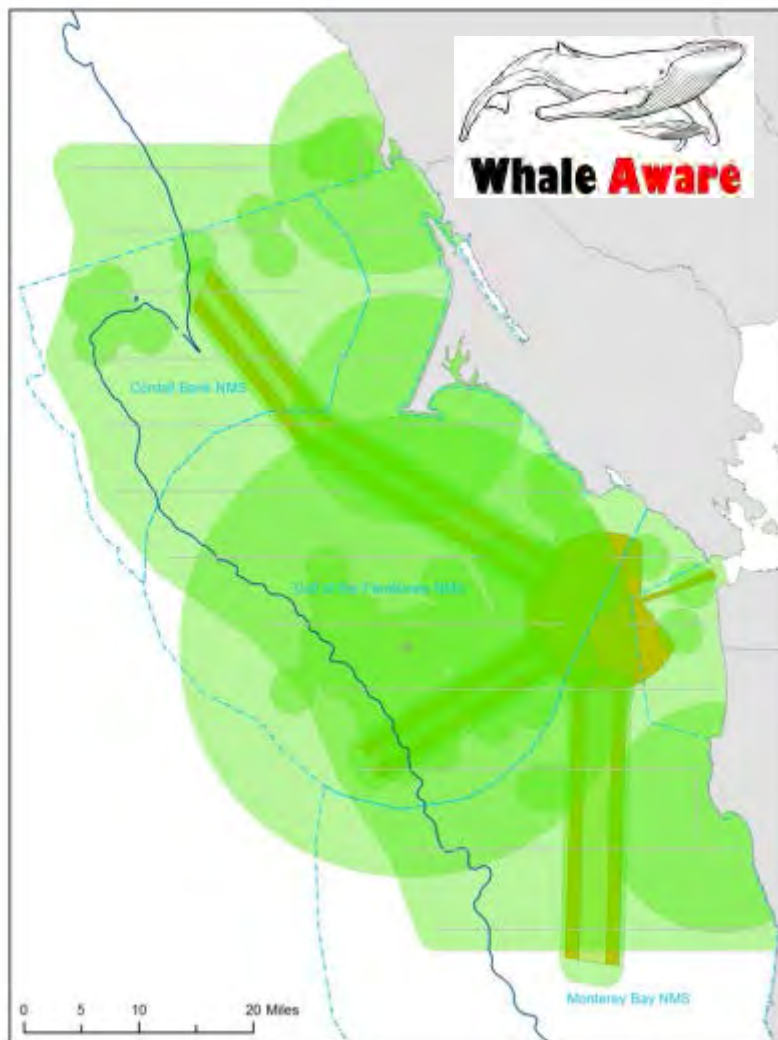


# Real-time whale sighting and monitoring network:



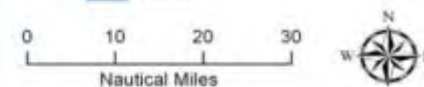
# Management Recommendation #3

## Dynamic Management Area



### Potential Dynamic Management Areas

- Cordell Bank Buoy
- Existing TSS
- Seaward Extent of State Waters
- National Marine Sanctuary
- 0 - 30m Depth
- 30 - 100m
- 100 - 200m
- 200 - 3000m
- >3000m Depth color swatch"/> >3000m



Contour Interval 100 Meters  
Not Intended for Navigation







# ATTENTION MARINERS



## Keep a Sharp Lookout for Whales and Report Sightings

Large whales off the west coast of the U.S. are federally protected species. You can help in their conservation by reporting sightings.



### Blue Whale

*Balaenoptera musculus*

- Up to 88 feet long
- Ridge along top of head
- Mottled bluish gray, often visible below surface
- Tall column blow



### Fin Whale

*Balaenoptera physalus*

- Up to 75 feet long
- Asymmetrical jaw color, white on right, ridge along top of head
- Brownish gray to black, paler underside
- Tall column blow



### Humpback Whale

*Megaptera novaeangliae*

- Up to 60 feet long
- Smooth knob or nodules along top of head
- Dark gray to black
- Medium slightly bushy blow



### Gray Whale

*Eschrichtius robustus*

- Up to 45 feet long
- Head often covered in barnacles
- Mottled gray and blotchy coloration
- More heart shaped blow



- Small variable shaped dorsal fin
- Dorsal fin not visible at blow
- Occasionally shows grayish flukes on final dive



- Medium back swept dorsal fin
- Often surfaces low in water with dorsal fin not showing
- Almost never shows flukes — in fact, if you see a whale fluke, it most likely is not a fin whale



- Small dorsal fin, hump in back, especially when diving
- Vary long pectoral fin (flippers) often seen at surface
- Typically arches high and shows flukes with scalloped trailing edge on last surfacing



- No dorsal fin but slight dorsal hump and knuckles
- Ridges or knuckles near tail
- Often shows flukes on final dive



# Mariner Outreach and Education

### REPORT WHALE SIGHTINGS

- Mariners are being asked to report all whale sightings. This information can help with the conservation of these species.
- If you see whales, please collect the following: GPS location, number and species. Email information to: [whales@noaa.gov](mailto:whales@noaa.gov)
- For information on whales in your area and any NOAA advisories, refer to your district USCG Local Notice to Mariners (LNM) at: <http://www.navcen.uscg.gov>
- For current information on whales and ship strikes go to: <http://sanctuaries.noaa.gov/protect/shipstrike/>

### HOW TO REPORT INJURED, DISTRESSED, ENTANGLED OR DEAD WHALE SIGHTINGS

**Call: (877) SOS-WHAlE [767-9425] or U.S. Coast Guard, VHF Channel 16**

#### SUPPLY THE FOLLOWING INFORMATION:

- GPS location and time of sighting, condition of whale, species if known, photographs if possible
- If you witness a strike, please provide the vessel information (ID), size and speed (if known)



# Thank You

