

Advisory Council Member Report At-Large Representative

P.J.Webb and Christina McGinnis
June 2019

MBNMS SAC At-Large Representative
What we do to connect with our
constituencies
region's residents, families, businesses,
agencies, organizations

Participation in Community and Coalition
Events

Network

Sanctuary Events

Sanctuary Advisory Council Activities

Community events to connect with constituents

Coastal Cleanup - annual community event
families, Girl Scout troops, school groups ranging from small children to Cal Poly students, tourists, bike riders who pick up trash along Highway 1

Community cleanup – July 5th beach cleanup

California King Tides project – annual statewide event



King
Tide
Project



Participation in Community and Coalition Events

Marine Coast Alliance - coalition formed in response to PG&E seismic acoustic testing proposal (grassroots advocates, NGOs)

Marine Interest Group - coalition of stakeholder groups in region modeled on the SAC to explore ocean protection options

Meeting Minutes

To: Deborah
Keefer
Dor

Bill Lovell
April Olin
Nancy

Reginald
Catherine
Dorothy

Barbara
Dorothy

APRIL
DOROTHY

APRIL
DOROTHY

APRIL
DOROTHY

APRIL
DOROTHY

APRIL
DOROTHY

APRIL
DOROTHY

APRIL
DOROTHY

APRIL
DOROTHY

APRIL
DOROTHY

APRIL
DOROTHY

APRIL
DOROTHY

APRIL
DOROTHY

APRIL
DOROTHY

APRIL
DOROTHY

APRIL
DOROTHY

APRIL
DOROTHY

APRIL
DOROTHY

APRIL
DOROTHY

APRIL
DOROTHY

APRIL
DOROTHY

APRIL
DOROTHY

APRIL
DOROTHY

APRIL
DOROTHY

APRIL
DOROTHY

APRIL
DOROTHY

APRIL
DOROTHY

APRIL
DOROTHY

APRIL
DOROTHY

APRIL
DOROTHY

APRIL
DOROTHY

APRIL
DOROTHY

APRIL
DOROTHY

APRIL
DOROTHY

APRIL
DOROTHY

APRIL
DOROTHY

APRIL
DOROTHY

APRIL
DOROTHY

APRIL
DOROTHY

APRIL
DOROTHY

Sanctuary Advisory Council
Monterey Bay National Marine Sanctuary
295 Fourth Street
Monterey, CA 93940
(831) 647-4201

December 16, 2010

To Whom it May Concern,

At its meeting on October 21, 2010 the Monterey Bay National Marine Sanctuary Advisory Council voted to draft a letter of support to assist the Marine Interest Group of San Luis Obispo County in their efforts to secure funding to continue the group's work. This community stakeholder group has played an important role in creating innovative collaborative partnerships that combine research, fishing, environmental and educational interests. The Sanctuary Advisory Council supports their continued efforts and encourages and invites the local community members to support the Marine Interest Group.

Sincerely,



Chris Harms
Sanctuary Advisory Council Chair



Participation in Community and Coalition Events

Northern Chumash Tribal Council - support efforts to strengthen environmental protection

-fracking ban

-oppose oil pipeline and proposed depot

-support Carrizo Plains monument protection

-work towards a Chumash Heritage National Marine Sanctuary designation





Participation in Community and Coalition Events

BLM - Piedras Blancas Light Station

Invasive species weed abatement - Boucher trail, light station

Scientists' projects - support and learn about Gray Whale count (drones)
northern elephant seal count

Opportunities to connect with several community volunteer groups

FES, Light Station docents, Coastal

Discovery center docents, Rotary Clubs

Participation in Community and Coalition Events



Eco-Rotary Club does weed abatement at Piedras Blancas Light Station

Participation in Community and Coalition Events

The Marine Mammal Center - 10 years as a volunteer marine mammal rescuer on San Luis Obispo county beaches participating in 100's of rescues including Southern sea otter mother/pup reunions

Friends of the Elephant Seal – past advisor to board, presented The Marine Mammal Center information to docents, drafted grants and contracts

Participation in Community and Coalition Events



Southern Sea Otter pup



Highway 1 traffic control

NETWORK:

Local Officials and Agencies:

Share information about OPC grants, other funding programs and resource for communities, CSDs, counties, regions

Meet with CCSD and SSCSD members to share our information and brainstorm about potential resources to support their boards on issues of climate change, water quality, etc.

Personal friendships with women working at different levels of government and agencies sharing insights about our personal challenges

Media Contacts

Chambers of Commerce:

San Simeon Chamber of Commerce - outreach for SAC newsletters and events

Cambria Chamber of Commerce - outreach for SAC newsletters and events

NETWORK:

Outreach and interaction with agricultural interest groups:

- ❖ Grower-Shipper Association
- ❖ Farm Bureau
- ❖ Agricultural Commissioner's office
- ❖ AQWA/RCD
- ❖ IWRMP discussions



OFFICE OF THE AGRICULTURAL COMMISSIONER

SITE MAP | 2017 CROP REPORT

HOME ABOUT US AGRICULTURAL & RESOURCE PROGRAMS LAND USE INVASIVE WEEDS WEIGHTS & MEASURES FORMS & PUBLICATIONS

Highlighting Conservation

Print Feedback Share & Bookmark Font Size: + -

Highlighting Conservation

Water Conservation Principles



Click on image to read more

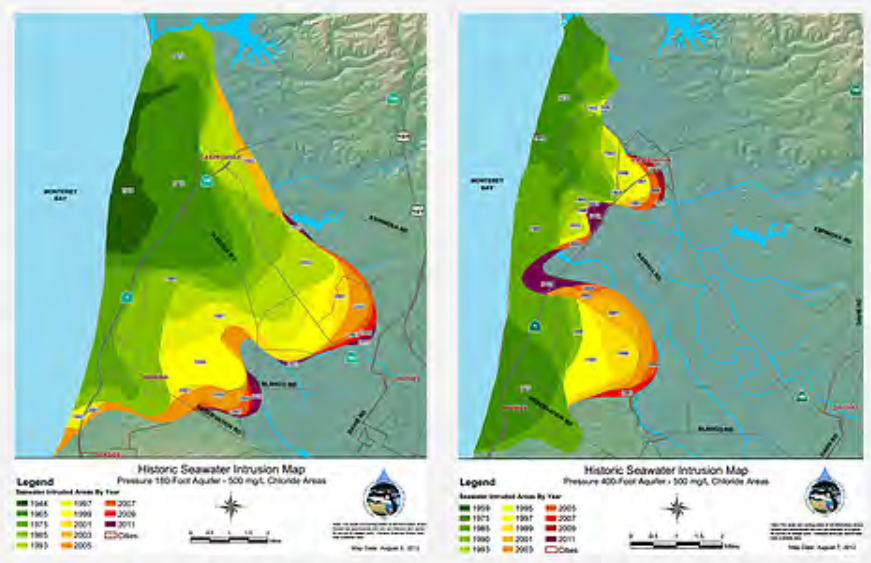
Land Use

- ▶ Agricultural Advisory Committee
- ▶ Highlighting Conservation
- ▶ Williamson Act
- ▶ Monterey County Farmer Highlight

This site was designed with the **WIX.com** website builder. Create your website today. [Start Now](#)

Seawater intrusion

The basin averages 50,000 acre-feet of overdraft in non-drought years, and estimates for drought years reach 150,000-300,000 acre-feet. Such consistent overdraft causes groundwater elevations to drop below sea level, allowing seawater to enter from the Monterey Bay into the Pressure Subarea 180-Foot and 400-Foot Aquifers (IRWMP 2013). The maps at right show the extent of seawater intrusion into those aquifers from 1946 to 2011. The Eastside subarea used to naturally provide recharge to the Pressure aquifers while controlling seawater intrusion, but overdraft has reversed the underground flow and prevented both the natural recharge and protection from seawater intrusion (MCWRA 2013: 3-4).



Extent of seawater intrusion. Source: MCWRA 2012, *Historic Seawater Intrusion Maps*.

Groundwater levels in the basin

By the mid-1990s, cones of depression in groundwater levels north and east of Salinas had occurred in the East Side subarea in both the 180-Foot and 400-Foot aquifers, indicating large decreases in groundwater levels. Since the 1990s, these areas experienced cycles of more pronounced and severe groundwater decreases, followed by cycles of somewhat recovering groundwater levels. In the past decade, the cones spread and merged into a larger area with overall less severely depressed groundwater levels. Water levels in the Pressure subarea have been relatively stable during this period, but this is because groundwater that has been pumped has been replaced by seawater, degrading the quality of water in the aquifer (MCWRA 2010).

This site was designed with the **WIX.com** website builder. Create your website today. [Start Now](#)

Buffer Strips and Vegetated Filter Strips

Conservation buffers are small areas or strips of land in permanent vegetation (trees, shrubs, grass) on farms. They can be especially useful near on-farm creeks, drainage ditches, reservoirs, and other perennial or intermittent streams (Central Coast Agricultural Water Quality Coalition, 2012; NRCS). Strategically placing buffers on a farm can effectively mitigate the movement of sediment, nutrients, and pesticides within and from fields. Buffers slow runoff, trap sediment, and enhance infiltration within the buffer (Massachusetts Department of Environmental Protection 2006).

They vary considerably in form and function. Field borders, vegetation planted in strips at the edge of fields, can be used for turn areas or travel lands for machinery. Riparian buffers are streamside planting of trees, shrubs, and grasses that can intercept pollutants from both surface and shallow groundwater before they reach a river or stream. They provide habitat for wildlife and enhance fish habitat by shading streams and creeks, thereby reducing water temperature. In areas with high salinity, growers can plant salt-tolerable vegetation that may ultimately help reduce saline seepage problems in the soil (CTIC 1999).

The main benefits of buffers include: soil and water quality

Buffer difference. Top: denuded buffers near Chualar along the Salinas River. *Source: Sierra Club Ventana Chapter.* Bottom: grass buffer strip on farm edge next to riparian forest provides soil and water quality protection. *Source: Central Coast Agricultural Water Quality Coalition.*



The Elkhorn Slough National Estuarine Research Reserve - one of 28 National Estuarine Research Reserves.

Focused interactions with researchers at Elkhorn Slough to try and determine what the issues were as they related to agricultural inputs and invasives.

*Review of scientist research and participation in field visits to learn about agricultural practices that would reduce the inputs to the slough and sanctuary waters





Greater Monterey County

Integrated Regional Water Management Program



- Home
- About
- News
- Documents
- IRWM Projects**
- Current Activities
- Performance
- Resources
- Español

Current Projects

In 2011, the Greater Monterey County IRWM region received a total of \$4,139,009 in IRWM Implementation Grant funds to implement seven environmental and water resource management projects. Those projects are currently being implemented. Below is a brief summary of the seven projects, along with the award amounts and each project's primary resource areas.

Translate »

Sanctuary Events

EVENTS:

Coastal Discovery Center Ocean Fair

Get Into Your Sanctuary day - connect with volunteers from different organizations and agencies with Sanctuary focus

Snapshot Day - 16 years annual team leader with variety of community volunteers to gather water samples and test for water quality

Beachcombers - Monthly survey to gather data on area beaches (Morro Strand and Moonstone)

- a great opportunity to educate the public about the sanctuary collaborative monitoring projects

LiMPETS - Quarterly monitoring and survey of intertidal area to evaluate the health of California's intertidal systems.



Snapshot Day

Get Into Your Sanctuary Day



SAC ACTIVITIES:



Working groups - STAR (Sanctuary Tourism and Recreation), review and submit area events from Cambria/San Simeon to working group news letters

Advocate for the Coastal Discovery Center

Participate in SAC leadership - Executive Committee, various positions

