

# MLPA Highlights

- North Central Coast: Implementation and Monitoring
- South Coast: Regulations/Adoption Phase
- North Coast: Planning Phase
- Central Coast: Monitoring

# North Central Coast (NCC)

- Regulations effective May 1, 2010 - delayed due to incorrect boundary listings for some MPAs; thus the regulations had to be re-noticed for 15 days.
- There are 22 new MPAs, plus 3 State Marine Recreational Management Areas (SMRMAs) and six Special Closures
- These comprise 153 square miles (20.1 percent) of state waters in the study region.
- 86 square miles (11 percent) are designated as "no take" State Marine Reserves.
- Monitoring plan will become part of the MLPA Master Plan, per Commission action taken April 7, 2010

# Stewarts Point Update

## New Regulations June 19, 2010



### Stewarts Point State Marine Conservation Area Boundary and Regulations from California Code of Regulations, Title 14 Section 632, sub-section (b)(11)

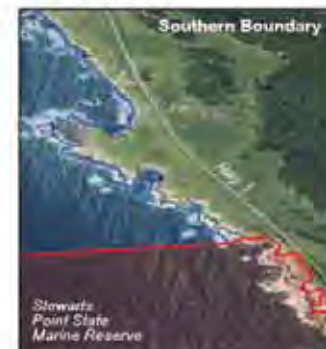
#### (A) Boundary

This area is bounded by the mean high tide line and straight lines connecting the following points in the order listed:

- 38° 40.500' N. lat. 123° 25.370' W. long. ①;
- 38° 40.500' N. lat. 123° 25.500' W. long. ②;
- 38° 37.500' N. lat. 123° 23.500' W. long. ③;
- 38° 37.535' N. lat. 123° 23.027' W. long. ④

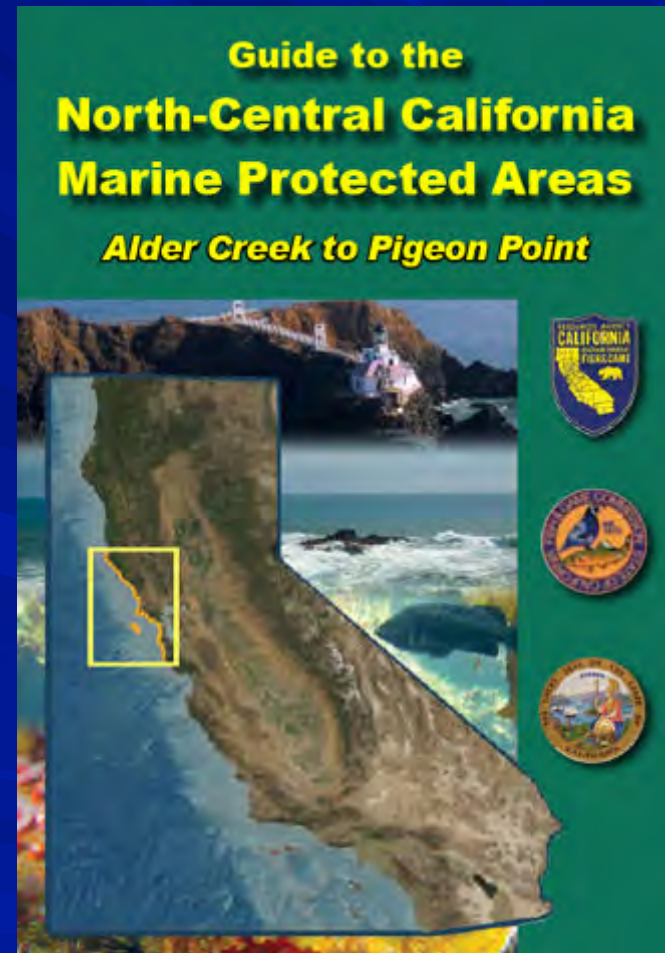
#### (B) Permitted/Prohibited Uses

Take of all living marine resources is prohibited except the following may be taken recreationally from shore only: marine aquatic plants other than sea palm, marine invertebrates, finfish [as identified in subsection 632(a)(2)] by hook and line, surf smelt by beach net, and species authorized in Section 28.80 of these regulations by handheld dip net.



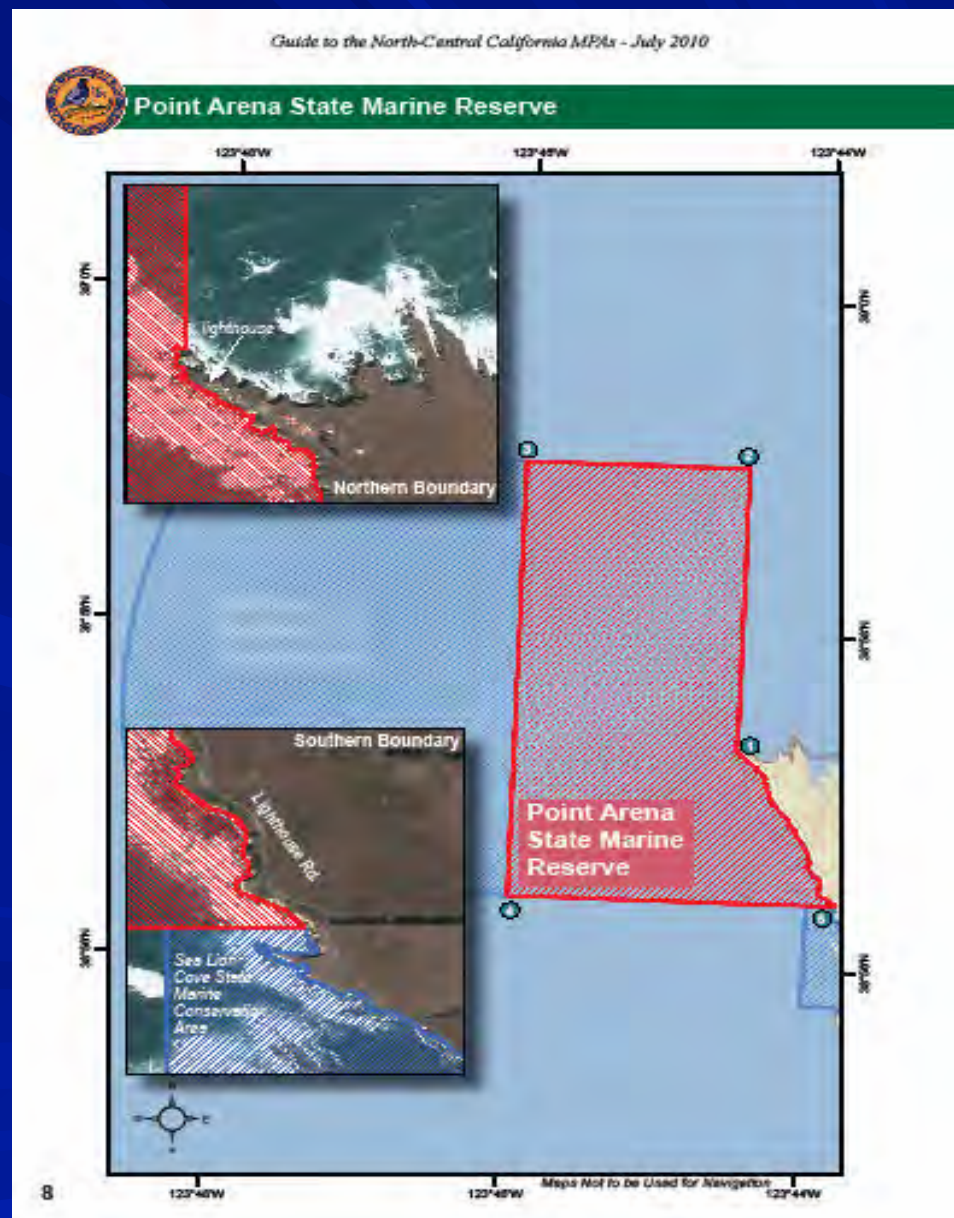
# New North Central Coast MPA Guide

- [www.dfg.ca.gov/mlpa/pdfs/nccmpas/nccmpas\\_guide.pdf](http://www.dfg.ca.gov/mlpa/pdfs/nccmpas/nccmpas_guide.pdf)
- Booklet includes all NCC MPAs with maps, coordinates and regulations
- Available at DFG offices
- Large distribution plan in development



# New North Central Coast MPA Guide

- NEW: Includes boundary landmarks (aerial imagery)
- Improved for shore and non-GPS users
- Plans for similar booklet for Central Coast MPAs (2010)



# North Central Coast Monitoring

- **Baseline Data Collection Project: \$4 million award from Ocean Protection Council Feb 2010**
  - analysis of citizen-science data from rocky shores and sandy beaches, collected by LiMPETS (Long-term Monitoring Program and Experiential Training for Students)
  - Other surveys of rocky intertidal ecosystems
  - PISCO Scuba surveys, kelp and shallow hard bottom
  - Reef Check California kelp bed scuba surveys
  - ROV surveys deep-water habitats
  - analysis of citizen-science data collected through Beach Watch
  - surveys of seabird distributions and ecology
  - socioeconomics and demographics of coastal use
  - aerial kelp surveys and intertidal habitat mapping
  - integrated ecosystem assessment

# South Coast Implementation Status

## Regulations Process Update

- Fish and Game Commission still prefers Integrated Preferred Alternative; some MPA sub-options
- Late August: Proposed Regulations package for south coast MPAs will be published
- Commission schedule update for proposed MPAs:
  - \*Discussion hearing rescheduled for Oct 6-7 in San Diego;
  - \*Adoption hearing for Dec 15-16 in Santa Barbara

# South Coast Implementation

## CEQA update:

- June 29: Commission and DFG issued Notice of Preparation for CEQA Environmental Impact Report (EIR)
- July 23: Public scoping meeting for EIR in Long Beach
- Aug 3: public comments closed for scope of analysis
- Aug 18: Draft EIR published, starts comment period
  - Draft EIR will address Integrated Preferred Alternative for MPAs, and 4 other Alternatives, one of them being the No-change Alternative
- Oct 4: Comment period for Draft EIR closes
- Oct 6-7: Commission meeting - will still receive CEQA Draft EIR oral comments
- Dec 16: Commission Certification of CEQA final EIR



# South Coast Implementation

## Monitoring Plan Development

- March 2010: Marine Protected Areas (MPA) Monitoring Enterprise invited submissions of qualifications from skilled facilitation consultants to assist with planning MPA monitoring for south coast
- July 19-26: Three public workshops held to provide input on south coast MPA monitoring plan

# North Coast Planning Process

## Meetings to Date:

### ■ RSG meetings:

- 9 meeting days held between Feb and July.
- Now at 34 members

### ■ BRTF meetings:

- 7 meeting days held between March and July;

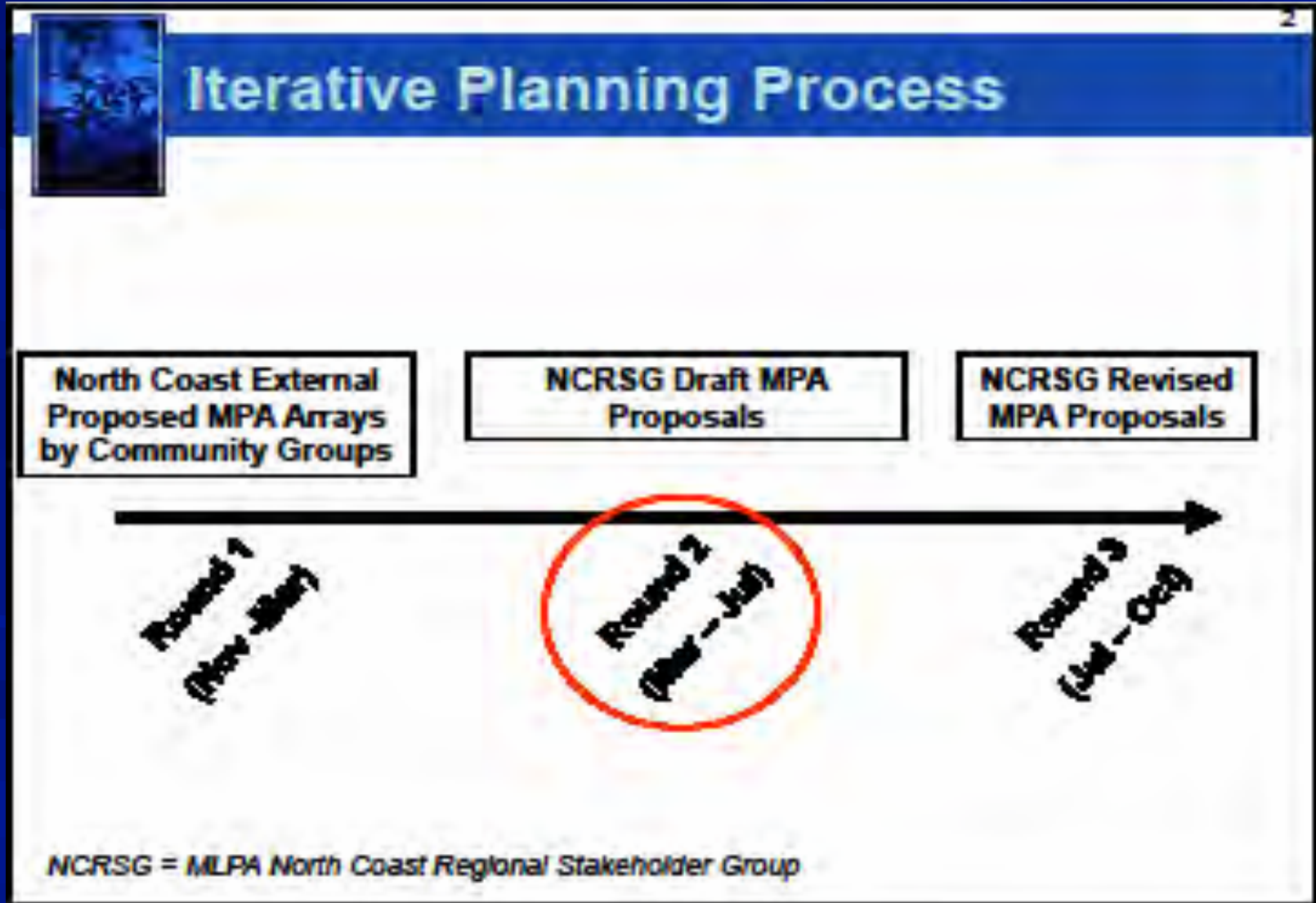
### ■ SAT meetings:

- 6 meeting days held between March and July

### ■ Public Open Houses:

- 6 open houses held July 6-8 in 6 locations for public feedback on draft MPA proposals

# North Coast Planning Process: MPA proposals



# Round 2 MPA Proposals

- RSG was split into two working groups (Ruby and Sapphire)
- Each work group developed two draft proposals:
  - Ruby 1 (23 MPAs, 14.3% of study region)
  - Ruby 2 (12 MPAs, 8.4% of study region)
  - Sapphire 1 (20 MPAs, 14.2% of study region)
  - Sapphire 2 (14 MPAs, 12.6% of study region)
- Staff summaries of proposals found at:  
[http://www.dfg.ca.gov/mlpa/mpaproposals\\_nc.asp](http://www.dfg.ca.gov/mlpa/mpaproposals_nc.asp)

# North Coast Planning Timeline

## Upcoming meetings

- RSG August 30-31 (Fortuna)
- SAT October 13-14 (Eureka)
- BRTF October 25-27 (Fortuna)
- SAT November 17 (teleconference)
- Joint BRTF/Commission meeting TBD
  - (December or January)

# Central coast monitoring



# Central coast monitoring

